



[Go to Product page](#)

Datasheet for ABIN1345350

## APOBEC3C Protein (AA 1-190) (GST tag)

### 1 Image

#### Overview

Quantity:	25 µg
Target:	APOBEC3C
Protein Characteristics:	AA 1-190
Origin:	Human
Source:	Wheat germ
Protein Type:	Recombinant
Purification tag / Conjugate:	This APOBEC3C protein is labelled with GST tag.
Application:	ELISA, Western Blotting (WB), Antibody Array (AA), Affinity Purification (AP)

#### Product Details

Purpose:	APOBEC3C (Human) Recombinant Protein (P01)
Sequence:	MNPQIRNPMK AMYPGTFYFQ FKNLWEANDR NETWLCFTVE GIKRRSVVSW KTGVFRNQVD SETHCHAERC FLSWFCDDIL SPNTKYQVTW YTSWSPCPDC AGEVAEFLAR HSNVNLTIFT ARLYYFYPC YQEGLRSLSQ EGVAVEIMDY EDFKYCWENF VYNDNEPFKP WKGLKTNFRL LKRRRLRESLQ
Characteristics:	Human APOBEC3C full-length ORF ( NP_055323.2, 1 a.a. - 190 a.a.) recombinant protein with GST-tag at N-terminal.
Purification:	in vitro wheat germ expression system

#### Target Details

Target:	APOBEC3C
---------	----------

## Target Details

Alternative Name:	APOBEC3C ( <a href="#">APOBEC3C Products</a> )
Background:	Full Gene Name: apolipoprotein B mRNA editing enzyme, catalytic polypeptide-like 3C Synonyms: APOBEC1L,ARDC2,ARDC4,ARP5,MGC19485,PBI,bK150C2.3
Gene ID:	27350
NCBI Accession:	<a href="#">NM_014508</a>

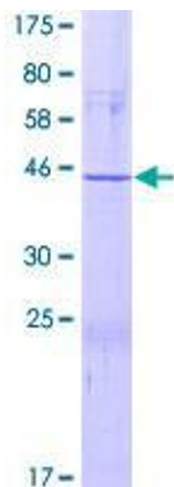
## Application Details

Application Notes:	Optimal working dilution should be determined by the investigator.
Comment:	Preparation method: in vitro, wheat germ expression system Product Quality tested by: 12.5% SDS-PAGE Stained with Coomassie Blue.
Restrictions:	For Research Use only

## Handling

Buffer:	50 mM Tris-HCl, 10 mM reduced Glutathione, pH =8.0 in the elution buffer.
Handling Advice:	Aliquot to avoid repeated freezing and thawing.
Storage:	-80 °C
Storage Comment:	Best use within three months from the date of receipt of this protein.

## Images



**Image 1.**