



[Go to Product page](#)

Datasheet for ABIN1345351
APOBEC3C Protein (AA 91-190) (GST tag)

1 Image

Overview

Quantity:	10 µg
Target:	APOBEC3C
Protein Characteristics:	AA 91-190
Origin:	Human
Source:	Wheat germ
Protein Type:	Recombinant
Purification tag / Conjugate:	This APOBEC3C protein is labelled with GST tag.
Application:	ELISA, Western Blotting (WB), Antibody Array (AA), Affinity Purification (AP)

Product Details

Purpose:	APOBEC3C (Human) Recombinant Protein (Q01)
Sequence:	YTSWSPCPDC AGEVAEFLAR HSNVNLTIFT ARLYYFQYPC YQEGLRSLSQ EGVAVEIMDY EDFKYCWENF VYNDNEPFKP WKGLKTNFRL LKRRRLRESLQ
Characteristics:	Human APOBEC3C partial ORF (NP_055323, 91 a.a. - 190 a.a.) recombinant protein with GST-tag at N-terminal.
Purification:	in vitro wheat germ expression system

Target Details

Target:	APOBEC3C
Alternative Name:	APOBEC3C (APOBEC3C Products)

Target Details

Background:	Gene: apolipoprotein B mRNA editing enzyme, catalytic polypeptide-like 3C Synonyms: APOBEC1L, ARDC2, ARDC4, ARP5, MGC19485, PBI, bK150C2.3
Gene ID:	27350
NCBI Accession:	NM_014508

Application Details

Application Notes:	Optimal working dilution should be determined by the investigator.
Restrictions:	For Research Use only

Handling

Buffer:	50 mM Tris-HCl, 10 mM reduced Glutathione, pH =8.0 in the elution buffer.
Handling Advice:	Aliquot to avoid repeated freezing and thawing.
Storage:	-80 °C
Storage Comment:	Best use within three months from the date of receipt of this protein.

Images

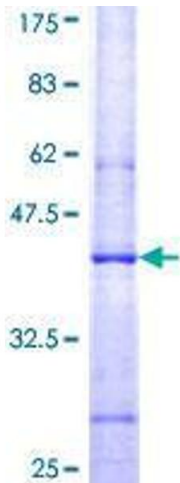


Image 1.