

Datasheet for ABIN1345353
APOBEC3D Protein (AA 1-386) (GST tag)



[Go to Product page](#)

1 Image

Overview

Quantity:	10 µg
Target:	APOBEC3D
Protein Characteristics:	AA 1-386
Origin:	Human
Source:	Wheat germ
Protein Type:	Recombinant
Purification tag / Conjugate:	This APOBEC3D protein is labelled with GST tag.
Application:	ELISA, Western Blotting (WB), Antibody Array (AA), Affinity Purification (AP)

Product Details

Purpose:	APOBEC3D (Human) Recombinant Protein (P01)
Sequence:	MNPQIRNPME RMYRDTFYDN FENEPILYGR SYTWLCYEVK IKRGRSNLLW DTGVFRGPVL PKRQSNHRQE VYFRFENHAE MCFLSWFCGN RLPANRRFQI TWVSWNPCL PCVVKVTKFL AEHPNVTLLI SAARLYYYRD RDWRWVLLRL HKAGARVKIM DYEDFAYCWE NFVCNEGQPF MPWYKFDDNY ASLHRTLKEI LRNPMEAMYP HIFYFHFKNL LKACGRNESW LCFTMEVTKH HSAVFRKRGV FRNQVDPETH CHAERCFLSW FCDDILSPNT NYEVTWYTSW SPCPECAGEV AEFLARHSNV NLTIPTARLC YFWDDTYQEG LCSLSQEGAS VKIMGYKDFV SCWKNFVYSD DEPFKPKWGL QTNFRLLKRR LREILQ
Characteristics:	Human APOBEC3D full-length ORF (ENSP00000216099, 1 a.a. - 386 a.a.) recombinant protein with GST-tag at N-terminal.
Purification:	in vitro wheat germ expression system

Target Details

Target:	APOBEC3D
Alternative Name:	APOBEC3D (APOBEC3D Products)
Background:	Full Gene Name: apolipoprotein B mRNA editing enzyme, catalytic polypeptide-like 3D Synonyms: APOBEC3DE,APOBEC3E,ARP6
Gene ID:	140564

Application Details

Application Notes:	Optimal working dilution should be determined by the investigator.
Comment:	Preparation method: in vitro, wheat germ expression system Product Quality tested by: 12.5% SDS-PAGE Stained with Coomassie Blue.
Restrictions:	For Research Use only

Handling

Buffer:	50 mM Tris-HCl, 10 mM reduced Glutathione, pH =8.0 in the elution buffer.
Handling Advice:	Aliquot to avoid repeated freezing and thawing.
Storage:	-80 °C
Storage Comment:	Best use within three months from the date of receipt of this protein.

Images

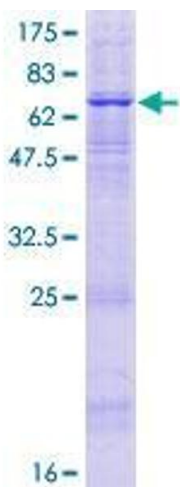


Image 1.