



Datasheet for ABIN1345357

APOBEC3F Protein (AA 274-372) (GST tag)



[Go to Product page](#)

1 Image

Overview

| | |
|-------------------------------|---|
| Quantity: | 10 µg |
| Target: | APOBEC3F |
| Protein Characteristics: | AA 274-372 |
| Origin: | Human |
| Source: | Wheat germ |
| Protein Type: | Recombinant |
| Purification tag / Conjugate: | This APOBEC3F protein is labelled with GST tag. |
| Application: | ELISA, Western Blotting (WB), Antibody Array (AA), Affinity Purification (AP) |

Product Details

| | |
|------------------|---|
| Purpose: | APOBEC3F (Human) Recombinant Protein (Q01) |
| Sequence: | YTSWSPCPEC AGEVAEFLAR HSNVNLTIFT ARLYYFWDTD YQEGLRSLSQ EGASVEIMGY KDFKYCWENF VYNDDEPFKP WKGLKYNFLF LDSKLQEIL |
| Characteristics: | Human APOBEC3F partial ORF (NP_660341, 274 a.a. - 372 a.a.) recombinant protein with GST-tag at N-terminal. |
| Purification: | in vitro wheat germ expression system |

Target Details

| | |
|-------------------|--|
| Target: | APOBEC3F |
| Alternative Name: | APOBEC3F (APOBEC3F Products) |

Target Details

| | |
|-----------------|---|
| Background: | Full Gene Name: apolipoprotein B mRNA editing enzyme, catalytic polypeptide-like 3F Synonyms: ARP8,BK150C2.4.MRNA,KA6,MGC74891 |
| Gene ID: | 200316 |
| NCBI Accession: | NM_145298 |

Application Details

| | |
|--------------------|--|
| Application Notes: | Optimal working dilution should be determined by the investigator. |
| Comment: | Preparation method: in vitro, wheat germ expression system Product Quality tested by: 12.5% SDS-PAGE Stained with Coomassie Blue. |
| Restrictions: | For Research Use only |

Handling

| | |
|------------------|---|
| Buffer: | 50 mM Tris-HCl, 10 mM reduced Glutathione, pH =8.0 in the elution buffer. |
| Handling Advice: | Aliquot to avoid repeated freezing and thawing. |
| Storage: | -80 °C |
| Storage Comment: | Best use within three months from the date of receipt of this protein. |

Images

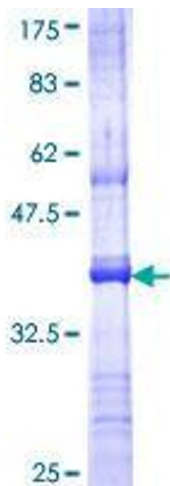


Image 1.