

Datasheet for ABIN1345363

APOBEC3H Protein (AA 1-182) (GST tag)[Go to Product page](#)

1 Image

Overview

Quantity:	10 µg
Target:	APOBEC3H
Protein Characteristics:	AA 1-182
Origin:	Human
Source:	Wheat germ
Protein Type:	Recombinant
Purification tag / Conjugate:	This APOBEC3H protein is labelled with GST tag.
Application:	ELISA, Western Blotting (WB), Antibody Array (AA), Affinity Purification (AP)

Product Details

Purpose:	APOBEC3H (Human) Recombinant Protein (P01)
Sequence:	MALLTAETFR LQFNKRRLR RPYYPKALL CYQLTPQNGS TPTRGYFENK KKCHAEICFI NEIKSMGLDE TQCYQVTCYL TWSPCSSCAW ELVDFIKAHD HLNLGIFASR LYYHWCKPQQ KGLRLLCGSQ VPVEVMGFPE FADCWENFVD HEKPLSFNPY KMLEELDKNS RAIKRRLERI KS
Characteristics:	Human APOBEC3H full-length ORF (AAH69023.1, 1 a.a. - 182 a.a.) recombinant protein with GST-tag at N-terminal.
Purification:	in vitro wheat germ expression system

Target Details

Target:	APOBEC3H
Alternative Name:	APOBEC3H (APOBEC3H Products)

Target Details

Background:	Full Gene Name: apolipoprotein B mRNA editing enzyme, catalytic polypeptide-like 3H Synonyms: ARP10,dJ742C19.2
Gene ID:	164668

Application Details

Application Notes:	Optimal working dilution should be determined by the investigator.
Comment:	Preparation method: in vitro, wheat germ expression system Product Quality tested by: 12.5% SDS-PAGE Stained with Coomassie Blue.
Restrictions:	For Research Use only

Handling

Buffer:	50 mM Tris-HCl, 10 mM reduced Glutathione, pH =8.0 in the elution buffer.
Handling Advice:	Aliquot to avoid repeated freezing and thawing.
Storage:	-80 °C
Storage Comment:	Best use within three months from the date of receipt of this protein.

Images

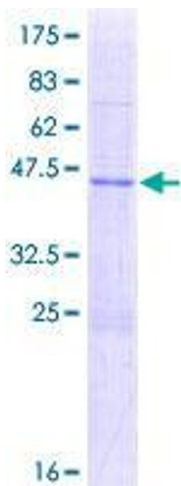


Image 1.