



[Go to Product page](#)

Datasheet for ABIN1345406

## APPL1 Protein (AA 1-709) (GST tag)

### 1 Image

#### Overview

Quantity:	10 µg
Target:	APPL1
Protein Characteristics:	AA 1-709
Origin:	Human
Source:	Wheat germ
Protein Type:	Recombinant
Purification tag / Conjugate:	This APPL1 protein is labelled with GST tag.
Application:	Western Blotting (WB), ELISA, Antibody Array (AA), Affinity Purification (AP)

#### Product Details

Purpose:	APPL1 (Human) Recombinant Protein (P01)
Sequence:	MPGIDKLP IE ETLEDSPQTR SLLGVFEEDA TAISNYMNQL YQAMHRIYDA QNELSAATHL TSKLLKEYEK QRFPLGGDDE VMSSTLQQFS KVIDELSSCH AVLSTQLADA MMFPITQFKE RDLKEILTLK EVFQIASNDH DAAINRYSRL SKKRENDKVK YEVTEDVYTS RKKQHQTMMH YFCALNTLQY KKKIALLEPL LGYMQAQISF FKMGSENLNE QLEEFANIG TSVQNVRRM DSDIETMQQT IEDLEVASDP LYVPDPDPTK FPNRNLTRK AGYLNARNKT GLVSSTWDRQ FYFTQGGNLM SQARGDVAGG LAMDIDNCSV MAVDCEDRRY CFQITSFDGK KSSILQAESK KDHEEWICTI NNISKQIYLS ENPEETAARV NQSALEAVTP SPSFQQRHES LRPAAGQSRP PTARTSSSGS LGSESTNLAA LSLDSLVPD TPIQFDIISP VCEDQPGQAK AFGQGRRRTN PFGESGGSTK SETEDSILHQ LFIVRFLGSM EVKSDDHPDV VYETMRQILA ARAIHNIIRM TESHLLVTCD CLKLIDPQTQ VTRLTFPLPC VVLYATHQEN KRLFGFVLR TSSGRSESNLS SVCYIFESNN EGEKICDSVG LAKQIALHAE LDRRASEKQK EIERVKEKQQ KELNKQKQIE

## Product Details

---

KDLEEQSRLLI AASSRPNQAS SEGQFVVLSS SQSEESDLGE GGKKRESEA

Characteristics: Human APPL1 full-length ORF ( NP\_036228.1, 1 a.a. - 709 a.a.) recombinant protein with GST-tag at N-terminal.

Purification: in vitro wheat germ expression system

## Target Details

---

Target: APPL1

Alternative Name: APPL1 ([APPL1 Products](#))

Background: Full Gene Name: adaptor protein, phosphotyrosine interaction, PH domain and leucine zipper containing 1  
Synonyms: APPL,DIP13alpha

Gene ID: 26060

NCBI Accession: [NM\\_012096](#)

## Application Details

---

Application Notes: Optimal working dilution should be determined by the investigator.

Comment: Preparation method: in vitro, wheat germ expression system  
Product Quality tested by: 12.5% SDS-PAGE Stained with Coomassie Blue.

Restrictions: For Research Use only

## Handling

---

Buffer: 50 mM Tris-HCl, 10 mM reduced Glutathione, pH =8.0 in the elution buffer.

Handling Advice: Aliquot to avoid repeated freezing and thawing.

Storage: -80 °C

Storage Comment: Best use within three months from the date of receipt of this protein.

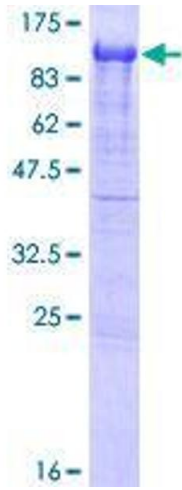


Image 1.