



[Go to Product page](#)

Datasheet for ABIN1345414  
**APRT Protein (AA 1-180) (GST tag)**

1 Image

Overview

Quantity:	10 µg
Target:	APRT
Protein Characteristics:	AA 1-180
Origin:	Human
Source:	Wheat germ
Protein Type:	Recombinant
Purification tag / Conjugate:	This APRT protein is labelled with GST tag.
Application:	Western Blotting (WB), ELISA, Antibody Array (AA), Affinity Purification (AP)

Product Details

Purpose:	APRT (Human) Recombinant Protein (P01)
Sequence:	MADSELQLVE QRIRSFDFP TPGVVFRDIS PVLKDPASFR AAIGLLARHL KATHGGRIDY IAGLDSRGFL FGPSLAQELG LGCVLIRKRG KLPGPTLWAS YSLEYGKAEL EIQKDALEPG QRVVVVDDLL ATGGTMNAAC ELLGRLQAEV LECVSLVELT SLKGREKLAP VPFFSLLQYE
Characteristics:	Human APRT full-length ORF ( NP_000476.1, 1 a.a. - 180 a.a.) recombinant protein with GST-tag at N-terminal.
Purification:	in vitro wheat germ expression system

Target Details

Target:	APRT
Alternative Name:	APRT ( <a href="#">APRT Products</a> )

## Target Details

Background:	Full Gene Name: adenine phosphoribosyltransferase Synonyms: AMP,DKFZp686D13177,MGC125856,MGC125857,MGC129961
Gene ID:	353
NCBI Accession:	<a href="#">NM_000485</a>
Pathways:	<a href="#">Ribonucleoside Biosynthetic Process</a>

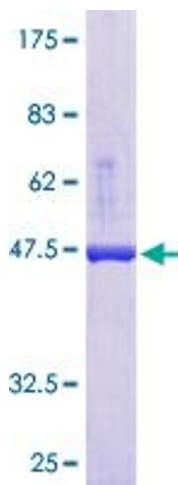
## Application Details

Application Notes:	Optimal working dilution should be determined by the investigator.
Comment:	Preparation method: in vitro, wheat germ expression system Product Quality tested by: 12.5% SDS-PAGE Stained with Coomassie Blue.
Restrictions:	For Research Use only

## Handling

Buffer:	50 mM Tris-HCl, 10 mM reduced Glutathione, pH =8.0 in the elution buffer.
Handling Advice:	Aliquot to avoid repeated freezing and thawing.
Storage:	-80 °C
Storage Comment:	Best use within three months from the date of receipt of this protein.

## Images



**Image 1.**