



[Go to Product page](#)

Datasheet for ABIN1345418

## Aprataxin Protein (APTX) (AA 69-166) (GST tag)

### 1 Image

#### Overview

Quantity:	10 µg
Target:	Aprataxin (APTX)
Protein Characteristics:	AA 69-166
Origin:	Human
Source:	Wheat germ
Protein Type:	Recombinant
Purification tag / Conjugate:	This Aprataxin protein is labelled with GST tag.
Application:	ELISA, Western Blotting (WB), Antibody Array (AA), Affinity Purification (AP)

#### Product Details

Purpose:	APTX (Human) Recombinant Protein (Q01)
Sequence:	KLRFRLGYHA IPSMSHVHLH VISQDFDSPC LKNKKHWNSF NTEYFLESQA VIEMVQEAGR VTVRDGMPPEL LKLPLRCHEC QQLLPSIPQL KEHLRKHW
Characteristics:	Human APTX partial ORF ( NP_778241.1, 69 a.a. - 166 a.a.) recombinant protein with GST-tag at N-terminal.
Purification:	in vitro wheat germ expression system

#### Target Details

Target:	Aprataxin (APTX)
Alternative Name:	APTX ( <a href="#">APTX Products</a> )

## Target Details

Background:	Full Gene Name: aprataxin Synonyms: AOA, AOA1, AXA1, EAOH, EOAHA, FHA-HIT, FLJ20157, MGC1072
Gene ID:	54840
NCBI Accession:	<a href="#">NM_175071</a>
Pathways:	<a href="#">DNA Damage Repair</a> , <a href="#">Chromatin Binding</a>

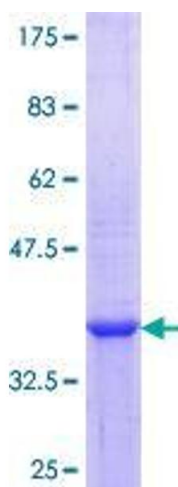
## Application Details

Application Notes:	Optimal working dilution should be determined by the investigator.
Comment:	Preparation method: in vitro, wheat germ expression system Product Quality tested by: 12.5% SDS-PAGE Stained with Coomassie Blue.
Restrictions:	For Research Use only

## Handling

Buffer:	50 mM Tris-HCl, 10 mM reduced Glutathione, pH =8.0 in the elution buffer.
Handling Advice:	Aliquot to avoid repeated freezing and thawing.
Storage:	-80 °C
Storage Comment:	Best use within three months from the date of receipt of this protein.

## Images



**Image 1.**