

Datasheet for ABIN1345430
ARAF Protein (AA 1-606) (GST tag)



[Go to Product page](#)

2 Images

Overview

Quantity:	10 µg
Target:	ARAF
Protein Characteristics:	AA 1-606
Origin:	Human
Source:	Wheat germ
Protein Type:	Recombinant
Purification tag / Conjugate:	This ARAF protein is labelled with GST tag.
Application:	Western Blotting (WB), ELISA, Antibody Array (AA), Affinity Purification (AP), Kinase Activity Assay (KAA)

Product Details

Purpose:	ARAF (Human) Recombinant Protein (P01)
Sequence:	MEPPRGPPAN GAEPSRAVGT VKVYLPNKQR TVVTVRDGMS VYDSLKALK VRGLNQDCCV VYRLIKGRKT VTAWDTAIP LDGEELIVEV LEDVPLTMHN FVRKTFSLA FPDFCLKFLF HGFRCQTCGY KFHQHCSSKV PTVCVDMSTN RQQFYHSVQD LSGGSRQHEA PSNRPLNELL TPQGSPRTQ HCDPEHFPPF APANAPLQRI RSTSTPNVHM VSTTAPMDSN LIQLTGQSFS TDAAGSRGGS DGTTPRGSPSP ASVSSGRKSP HSKSPAEQRE RKSLADDKKK VKNLGYRDSG YYWEVPPSEV QLLKRIGTGS FGTVFRGRWH GDVAVKVLKV SQPTAEQAQA FKNEMQVLRK TRHVNILLFM GFMTRPGFAI ITQWCEGSSL YHHLHVADTR FDMVQLIDVA RQTAQGMDYL HAKNIIHRDL KSNNIFLHEG LTVKIGDFGL ATVKTRWSGA QPLEQPSGSV LWMAAEVIRM QDPNPYSFQS DVYAYGVVLY ELMTGSLPYS HIGCRDQIIF MVGRGYLSPD LSKISSNCPK AMRRLSDCL KFQREERPLF PQILATIELL QRSLPKIERS ASEPSLHRTQ ADELPACLLS AARLVP

Product Details

Characteristics:	Human ARAF full-length ORF (AAH02466, 1 a.a. - 606 a.a.) recombinant protein with GST-tag at N-terminal.
Purification:	in vitro wheat germ expression system

Target Details

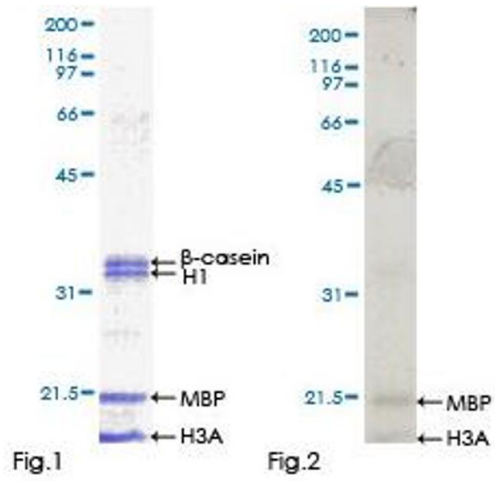
Target:	ARAF
Alternative Name:	ARAF (ARAF Products)
Background:	Gene: v-raf murine sarcoma 3611 viral oncogene homolog Synonyms: A-RAF, ARAF1, PKS2, RAFA1
Gene ID:	369
Pathways:	MAPK Signaling , RTK Signaling , Hepatitis C

Application Details

Application Notes:	Optimal working dilution should be determined by the investigator.
Restrictions:	For Research Use only

Handling

Buffer:	50 mM Tris-HCl, 10 mM reduced Glutathione, pH =8.0 in the elution buffer.
Handling Advice:	Aliquot to avoid repeated freezing and thawing.
Storage:	-80 °C
Storage Comment:	Best use within three months from the date of receipt of this protein.



Kinase Activity Assay

Image 1.

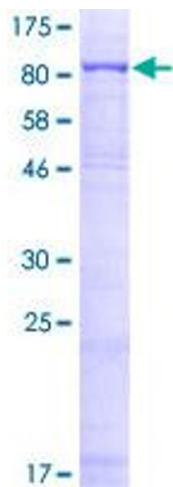


Image 2.