



[Go to Product page](#)

Datasheet for ABIN1345434

ARAF Protein (AA 221-320) (GST tag)

1 Image

Overview

Quantity:	10 µg
Target:	ARAF
Protein Characteristics:	AA 221-320
Origin:	Human
Source:	Wheat germ
Protein Type:	Recombinant
Purification tag / Conjugate:	This ARAF protein is labelled with GST tag.
Application:	Western Blotting (WB), ELISA, Antibody Array (AA), Affinity Purification (AP)

Product Details

Purpose:	ARAF (Human) Recombinant Protein (Q01)
Sequence:	VSTTAPMDSN LIQLTGQSFS TDAAGSRGGS DGTPRGSPSP ASVSSGRKSP HSKSPAEQRE RKSLADDDKKK VKNLGYRDSG YYWEVPPSEV QLLKRIGTGS
Characteristics:	Human ARAF partial ORF (AAH02466, 221 a.a. - 320 a.a.) recombinant protein with GST-tag at N-terminal.
Purification:	in vitro wheat germ expression system

Target Details

Target:	ARAF
Alternative Name:	ARAF (ARAF Products)

Target Details

Background:	Full Gene Name: v-raf murine sarcoma 3611 viral oncogene homolog Synonyms: A-RAF,ARAF1,PKS2,RAFA1
Gene ID:	369
Pathways:	MAPK Signaling , RTK Signaling , Hepatitis C

Application Details

Application Notes:	Optimal working dilution should be determined by the investigator.
Comment:	Preparation method: in vitro, wheat germ expression system Product Quality tested by: 12.5% SDS-PAGE Stained with Coomassie Blue.
Restrictions:	For Research Use only

Handling

Buffer:	50 mM Tris-HCl, 10 mM reduced Glutathione, pH =8.0 in the elution buffer.
Handling Advice:	Aliquot to avoid repeated freezing and thawing.
Storage:	-80 °C
Storage Comment:	Best use within three months from the date of receipt of this protein.

Images

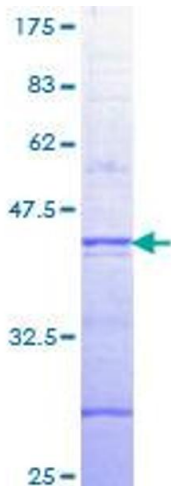


Image 1.