



[Go to Product page](#)

Datasheet for ABIN1345446

## ARCN1 Protein (AA 1-511) (GST tag)

### 1 Image

#### Overview

Quantity:	25 µg
Target:	ARCN1
Protein Characteristics:	AA 1-511
Origin:	Human
Source:	Wheat germ
Protein Type:	Recombinant
Purification tag / Conjugate:	This ARCN1 protein is labelled with GST tag.
Application:	ELISA, Western Blotting (WB), Antibody Array (AA), Affinity Purification (AP)

#### Product Details

Purpose:	ARCN1 (Human) Recombinant Protein (P01)
Sequence:	MVLLAAAVCT KAGKAIVSRQ FVEMTRTRIE GLLAAFPCLM NTGKQHTFVE TESVRYVYQP MEKLYMVLIT TKNSNILEDL ETLRLFSRVI PEYCRALEEN EISEHCFDLI FAFDEIVALG YRENVNLAQI RTFTEMDSHE EKVFRVAVRET QEREAKAEMR RKAKELQQAR RDAERQGKKA PGFGGFGSSA VSGGSTAAMI TETIIETDKP KVAPAPARPS GPSKALKLGA KGKEVDNFVD KLKSEGETIM SSSMGKRTSE ATKMHAPPIN MESVHMKIEE KITLTCGRDG GLQNMELHGM IMLRISDDKY GRIRLHVENE DKKGVQLQTH PNVDKKLFTA ESLIGLKNPE KSFPVNSDVG VLKWRLQTTE ESFIPLTINC WPSESGNGCD VNIEYELQED NLELNDVVIT IPLPSGVGAP VIGEIDGEYR HDSRRNTLEW CLPVIDAKNK SGSLEFSIAG QPNDFFPVQV SFVSKKNYCN IQVTKVTQVD GNSPVRFSTE TTFLVDKYEI L
Characteristics:	Human ARCN1 full-length ORF ( NP_001646.2, 1 a.a. - 511 a.a.) recombinant protein with GST-tag at N-terminal.

## Product Details

---

Purification: in vitro wheat germ expression system

## Target Details

---

Target: ARCN1

Alternative Name: ARCN1 ([ARCN1 Products](#))

Background: Full Gene Name: archain 1  
Synonyms: COPD

Gene ID: 372

NCBI Accession: [NM\\_001655](#)

## Application Details

---

Application Notes: Optimal working dilution should be determined by the investigator.

Comment: Preparation method: in vitro, wheat germ expression system  
Product Quality tested by: 12.5% SDS-PAGE Stained with Coomassie Blue.

Restrictions: For Research Use only

## Handling

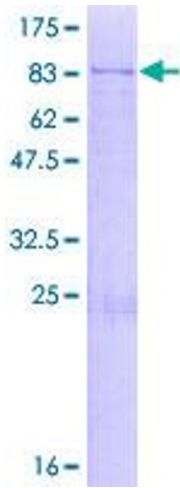
---

Buffer: 50 mM Tris-HCl, 10 mM reduced Glutathione, pH =8.0 in the elution buffer.

Handling Advice: Aliquot to avoid repeated freezing and thawing.

Storage: -80 °C

Storage Comment: Best use within three months from the date of receipt of this protein.



**Image 1.**