



[Go to Product page](#)

Datasheet for ABIN1345447

NAA10 Protein (AA 1-235) (GST tag)

1 Image

Overview

Quantity:	10 µg
Target:	NAA10 (ARD1A)
Protein Characteristics:	AA 1-235
Origin:	Human
Source:	Wheat germ
Protein Type:	Recombinant
Purification tag / Conjugate:	This NAA10 protein is labelled with GST tag.
Application:	ELISA, Western Blotting (WB), Antibody Array (AA), Affinity Purification (AP)

Product Details

Purpose:	ARD1 (Human) Recombinant Protein (P01)
Sequence:	MNIRNARPED LMNMQHCNLL CLPENYQMKY YFYHGLSWPQ LSYIAEDENG KIVGYVLAKM EEDPDDVPHG HITSLAVKRS HRRLGLAQKL MDQASRAMIE NFNAKYVSLH VRKSNRAALH LYSNTLNFQI SEVEPKYYAD GEDAYAMKRD LTQMADELRR HLELKEKGRH VWLGAIVENKV ESKGNPSS GEACREEKGL AAEDSGGDSK DLSEVSETTE STDVKDSSEA SDSAS
Characteristics:	Human ARD1 full-length ORF (AAH00308, 1 a.a. - 235 a.a.) recombinant protein with GST-tag at N-terminal.
Purification:	in vitro wheat germ expression system

Target Details

Target:	NAA10 (ARD1A)
---------	---------------

Target Details

Alternative Name:	ARD1A (ARD1A Products)
Background:	Full Gene Name: ARD1 homolog A, N-acetyltransferase (<i>S. cerevisiae</i>) Synonyms: ARD1,DXS707,MGC71248,TE2
Gene ID:	8260

Application Details

Application Notes:	Optimal working dilution should be determined by the investigator.
Comment:	Preparation method: in vitro, wheat germ expression system Product Quality tested by: 12.5% SDS-PAGE Stained with Coomassie Blue.
Restrictions:	For Research Use only

Handling

Buffer:	50 mM Tris-HCl, 10 mM reduced Glutathione, pH =8.0 in the elution buffer.
Handling Advice:	Aliquot to avoid repeated freezing and thawing.
Storage:	-80 °C
Storage Comment:	Best use within three months from the date of receipt of this protein.

Images

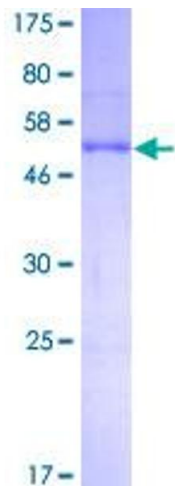


Image 1.