



[Go to Product page](#)

Datasheet for ABIN1345463

ARF5 Protein (AA 1-180) (GST tag)

1 Image

Overview

Quantity:	10 µg
Target:	ARF5
Protein Characteristics:	AA 1-180
Origin:	Human
Source:	Wheat germ
Protein Type:	Recombinant
Purification tag / Conjugate:	This ARF5 protein is labelled with GST tag.
Application:	ELISA, Western Blotting (WB), Antibody Array (AA), Affinity Purification (AP)

Product Details

Purpose:	ARF5 (Human) Recombinant Protein (P01)
Sequence:	MGLTVSALFS RIFGKKQMRI LMVGLDAAGK TTILYKCLKG EIVTTIPTIG FNVETVEYKN ICFTVWDVGG QDKIRPLWRH YFQNTQGLIF VVDSNDRERV QESADELQKM LQEDEL RDAV LLVFANKQDM PNAMPVSELT DKLGLQHLRS RTWYVQATCA TQGTGLYDGL DWLSHEL SKR
Characteristics:	Human ARF5 full-length ORF (NP_001653.1, 1 a.a. - 180 a.a.) recombinant protein with GST-tag at N-terminal.
Purification:	in vitro wheat germ expression system

Target Details

Target:	ARF5
Alternative Name:	ARF5 (ARF5 Products)

Target Details

Background: Full Gene Name: ADP-ribosylation factor 5
Synonyms:

Gene ID: 381

NCBI Accession: [NM_001662](#)

Application Details

Application Notes: Optimal working dilution should be determined by the investigator.

Comment: Preparation method: in vitro, wheat germ expression system
Product Quality tested by: 12.5% SDS-PAGE Stained with Coomassie Blue.

Restrictions: For Research Use only

Handling

Buffer: 50 mM Tris-HCl, 10 mM reduced Glutathione, pH =8.0 in the elution buffer.

Handling Advice: Aliquot to avoid repeated freezing and thawing.

Storage: -80 °C

Storage Comment: Best use within three months from the date of receipt of this protein.

Images

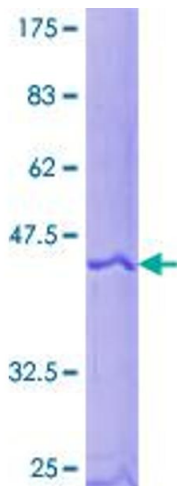


Image 1.