



[Go to Product page](#)

Datasheet for ABIN1345476

## ARFGEF1 Protein (AA 311-411) (GST tag)

### 1 Image

#### Overview

Quantity:	10 µg
Target:	ARFGEF1
Protein Characteristics:	AA 311-411
Origin:	Human
Source:	Wheat germ
Protein Type:	Recombinant
Purification tag / Conjugate:	This ARFGEF1 protein is labelled with GST tag.
Application:	Antibody Array (AA), Affinity Purification (AP), ELISA, Western Blotting (WB)

#### Product Details

Purpose:	ARFGEF1 (Human) Recombinant Protein (Q01)
Sequence:	EVLYDGENHD CEEKPQDIVQ NIVEEMVNIV VGDMGEGTTI NASADGNIGT IEDGSDSENI QANGIPGTPI SVAYTPSLPD DRLSVSSNDT QESGNSSGPS P
Characteristics:	Human ARFGEF1 partial ORF ( NP_006412.2, 311 a.a. - 411 a.a.) recombinant protein with GST-tag at N-terminal.
Purification:	in vitro wheat germ expression system

#### Target Details

Target:	ARFGEF1
Alternative Name:	ARFGEF1 ( <a href="#">ARFGEF1 Products</a> )

## Target Details

Background:	Full Gene Name: ADP-ribosylation factor guanine nucleotide-exchange factor 1 (brefeldin A-inhibited) Synonyms: ARFGEP1,BIG1,D730028018Rik,DKFZP434L057,P200
Gene ID:	10565
NCBI Accession:	<a href="#">NM_006421</a>
Pathways:	<a href="#">Regulation of Actin Filament Polymerization</a> , <a href="#">Regulation of Carbohydrate Metabolic Process</a>

## Application Details

Application Notes:	Optimal working dilution should be determined by the investigator.
Comment:	Preparation method: in vitro, wheat germ expression system Product Quality tested by: 12.5% SDS-PAGE Stained with Coomassie Blue.
Restrictions:	For Research Use only

## Handling

Buffer:	50 mM Tris-HCl, 10 mM reduced Glutathione, pH =8.0 in the elution buffer.
Handling Advice:	Aliquot to avoid repeated freezing and thawing.
Storage:	-80 °C
Storage Comment:	Best use within three months from the date of receipt of this protein.

## Images

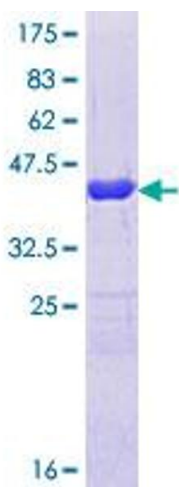


Image 1.