



[Go to Product page](#)

Datasheet for ABIN1345490

## ARGFX Protein (AA 1-315) (GST tag)

### 1 Image

#### Overview

Quantity:	10 µg
Target:	ARGFX
Protein Characteristics:	AA 1-315
Origin:	Human
Source:	Wheat germ
Protein Type:	Recombinant
Purification tag / Conjugate:	This ARGFX protein is labelled with GST tag.
Application:	ELISA, Western Blotting (WB), Antibody Array (AA), Affinity Purification (AP)

#### Product Details

Purpose:	ARGFX (Human) Recombinant Protein (P01)
Sequence:	MRNRMAPENP QPDPFINRNY SNMKVIPPOD PASPSFTLLS KLECSGTVSA YCSLNLPGST DPPTSASRVA ATTAIRRRHK ERTSFTHQY EEEALFSQT MFPDRNLQEK LALRLDPES TVKVVFRNRR FKLKKQQQQQ SAKQRNQILP SKKNVPTSPR TSPSPYAFSP VISDFYSSLP SQPLPSNWA WNSTFTESST SDFQMQDTQW ERLVASVPAL YSDAYDIFQI IELYNLPDEN EISSSFHCL YQYLSPTKYQ VGGQGSSLSI FAGPAVGLSP AQTWPNMTSQ AFEAYSLTDS LEFQKTSNMV DLGFL
Characteristics:	Human ARGFX full-length ORF ( NP_001012677.1, 1 a.a. - 315 a.a.) recombinant protein with GST-tag at N-terminal.
Purification:	in vitro wheat germ expression system

## Target Details

Target:	ARGFX
Alternative Name:	ARGFX ( <a href="#">ARGFX Products</a> )
Background:	Full Gene Name: arginine-fifty homeobox Synonyms:
Gene ID:	503582
NCBI Accession:	<a href="#">NM_001012659</a>

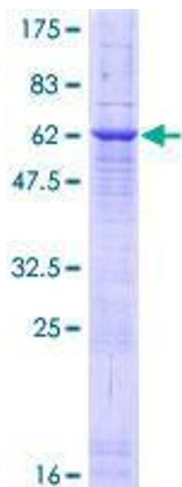
## Application Details

Application Notes:	Optimal working dilution should be determined by the investigator.
Comment:	Preparation method: in vitro, wheat germ expression system Product Quality tested by: 12.5% SDS-PAGE Stained with Coomassie Blue.
Restrictions:	For Research Use only

## Handling

Buffer:	50 mM Tris-HCl, 10 mM reduced Glutathione, pH =8.0 in the elution buffer.
Handling Advice:	Aliquot to avoid repeated freezing and thawing.
Storage:	-80 °C
Storage Comment:	Best use within three months from the date of receipt of this protein.

## Images



**Image 1.**