

Datasheet for ABIN1345504  
**ARHGAP25 Protein (AA 1-458) (GST tag)**



[Go to Product page](#)

1 Image

## Overview

Quantity:	10 µg
Target:	ARHGAP25
Protein Characteristics:	AA 1-458
Origin:	Human
Source:	Wheat germ
Protein Type:	Recombinant
Purification tag / Conjugate:	This ARHGAP25 protein is labelled with GST tag.
Application:	ELISA, Western Blotting (WB), Antibody Array (AA), Affinity Purification (AP)

## Product Details

Purpose:	ARHGAP25 (Human) Recombinant Protein (P01)
Sequence:	MSLGQSACLF LSIARSR SVM TGEQMAAFHP SSTPNPLERP IKMGWLKKQR SIVKNWQQRY FVLRAQQLYY YKDEEDTKPQ GCMYLPGCTI KEIATNPEEA GKVFVEIIPA SWDQNRMGQD SYVLMASQA EMEEWVKFLR RVAGTPCGAV FGQRLDETVA YEQKFGPHLV PILVEKCAEF ILEHGRNEEG IFRLPGQDNL VKQLRDAFDA GERPSFDRDT DVHTVASLLK LYLRDLPEPV VPWSQYEGFL LCGQLTNADE AKAQQELMKQ LSILPRDNYS LLSYICRFLH EIQLNCAVNK MSVDNLATVI GVNLRISKVE DPAVIMRGTP QIQRVMTMMI RDHEVLFPKS KDIPLSPPAQ KNDPKKAPVA RSSVGWDATE DLRISRTDSF SSMVRCREPS CFHWWLPLVQ AIPCKACSRV AIWGVLGDAV AVGAAATDSS EHTLKAWPLS KSSFYWHL
Characteristics:	Human ARHGAP25 full-length ORF ( AAH39591.1, 1 a.a. - 458 a.a.) recombinant protein with GST-tag at N-terminal.

## Product Details

---

Purification: in vitro wheat germ expression system

## Target Details

---

Target: ARHGAP25

Alternative Name: ARHGAP25 (ARHGAP25 Products)

Background: Full Gene Name: Rho GTPase activating protein 25  
Synonyms: KAIA0053

Gene ID: 9938

## Application Details

---

Application Notes: Optimal working dilution should be determined by the investigator.

Comment: Preparation method: in vitro, wheat germ expression system  
Product Quality tested by: 12.5% SDS-PAGE Stained with Coomassie Blue.

Restrictions: For Research Use only

## Handling

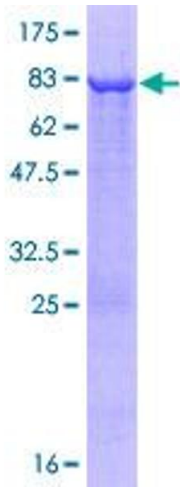
---

Buffer: 50 mM Tris-HCl, 10 mM reduced Glutathione, pH =8.0 in the elution buffer.

Handling Advice: Aliquot to avoid repeated freezing and thawing.

Storage: -80 °C

Storage Comment: Best use within three months from the date of receipt of this protein.



**Image 1.**