

Datasheet for ABIN1345525

ARHGDIB Protein (AA 1-201) (GST tag)



[Go to Product page](#)

1 Image

Overview

Quantity:	10 µg
Target:	ARHGDIB
Protein Characteristics:	AA 1-201
Origin:	Human
Source:	Wheat germ
Protein Type:	Recombinant
Purification tag / Conjugate:	This ARHGDIB protein is labelled with GST tag.
Application:	Western Blotting (WB), ELISA, Antibody Array (AA), Affinity Purification (AP)

Product Details

Purpose:	ARHGDIB (Human) Recombinant Protein (P01)
Sequence:	MTEKAPEPHV EEDDDDELDS KLNYPKPPQK SLKELQEMDK DDESLIKYKK TLLGDGPVVT DPKAPNVVVT RLTLVCESAP GPITMDLTGD LEALKKETIV LKEGSEYRVK IHFKVNRDIV SGLKYVQHTY RTGVKVDKAT FMVGSYGPRP EEEYFLTPVE EAPKGMLARG TYHNKSFFTD DDKQDHLSWE WNLSIKKEWT E
Characteristics:	Human ARHGDIB full-length ORF (AAH09200, 1 a.a. - 201 a.a.) recombinant protein with GST-tag at N-terminal.
Purification:	in vitro wheat germ expression system

Target Details

Target:	ARHGDIB
---------	---------

Target Details

Alternative Name:	ARHGDIB (ARHGDIB Products)
Background:	Full Gene Name: Rho GDP dissociation inhibitor (GDI) beta Synonyms: D4,GDIA2,GDID4,LYGDI,Ly-GDI,RAP1GN1,RhoGDI2
Gene ID:	397
Pathways:	Caspase Cascade in Apoptosis

Application Details

Application Notes:	Optimal working dilution should be determined by the investigator.
Comment:	Preparation method: in vitro, wheat germ expression system Product Quality tested by: 12.5% SDS-PAGE Stained with Coomassie Blue.
Restrictions:	For Research Use only

Handling

Buffer:	50 mM Tris-HCl, 10 mM reduced Glutathione, pH =8.0 in the elution buffer.
Handling Advice:	Aliquot to avoid repeated freezing and thawing.
Storage:	-80 °C
Storage Comment:	Best use within three months from the date of receipt of this protein.

Images

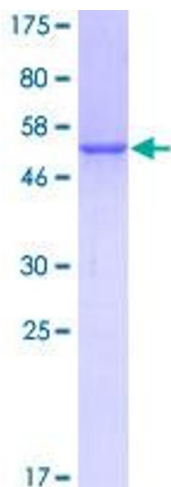


Image 1.