



[Go to Product page](#)

Datasheet for ABIN1345545

ARHGEF19 Protein (AA 1-802) (GST tag)

1 Image

Overview

Quantity:	25 µg
Target:	ARHGEF19
Protein Characteristics:	AA 1-802
Origin:	Human
Source:	Wheat germ
Protein Type:	Recombinant
Purification tag / Conjugate:	This ARHGEF19 protein is labelled with GST tag.
Application:	ELISA, Western Blotting (WB), Antibody Array (AA), Affinity Purification (AP)

Product Details

Purpose:	ARHGEF19 (Human) Recombinant Protein (P01)
Sequence:	MDCGPPATLQ PHLTGPPGTA HHPVAVCQQE SLSFAELPAL KPPSPVCLDL FPVAPEELRA PGSRWSLGTP APLQGLLWPL SPGGSDTEIT SGGMRPSRAG SWPHCPGAQP PALEGPWSPR HTQPQRASH GSEKSAWRK MRVYQREEVP GCPEAHAVFL EPGQVVQEQA LSTEEPVEL SGSTRVSLEG PERRRFSASE LMTRLHSSLR LGRNSAARAL ISGSGTGAAR EGKASGMear SVEMSGDRVS RPAPGDSREG DWSEPRLDQ EEPPLGSRST NERRQSRFLL NSVLYQEYSD VASARELRRQ QREEEGPGDE AEGAEEGPGP PRANLSPSSS FRAQRSARGS TFSLWQDIPD VRGSGVLATL SLRDCKLQEA KFELITSEAS YIHSLSVAVG HFLGSAELSE CLGAQDKQWL FSKLPEVKST SERFLQDLEQ RLEADVLRFS VCDVLDHCP AFRRVYLPYV TNQAYQERTY QRLLLENPRF PGILARLEES PVCQRLPLTS FLILPFQRIT RLKMLVENIL KRTAQGSEDE DMATKAFNAL KELVQECNAS VQSMKRTEEL IHLSKKIHFE GKIFPLISQA RWLVRHGELV ELAPLPAAPP AKLKLSSKAV YLHLFNDCLL LSRRKELGKF AVFVHAKMAE LQVRDLSLKL

Product Details

QGIPGHVFL LQLLHGQHMKH QFLLRARTES EKQRWISALC PSSPQEDKEV ISEGEDCPQV
QCVRTYKALH PDELTLEKTD ILSVRTWTSD GWLEGVRLAD GEKGVWPQAY VEEISSLSAR
LRNLRENKRV TSATSKLGEA PV

Characteristics: Human ARHGEF19 full-length ORF (NP_694945.2, 1 a.a. - 802 a.a.) recombinant protein with GST-tag at N-terminal.

Purification: in vitro wheat germ expression system

Target Details

Target: ARHGEF19

Alternative Name: ARHGEF19 ([ARHGEF19 Products](#))

Background: Full Gene Name: Rho guanine nucleotide exchange factor (GEF) 19
Synonyms: FLJ33962,RP4-733M16.1,WGEF

Gene ID: 128272

NCBI Accession: [NM_153213](#)

Application Details

Application Notes: Optimal working dilution should be determined by the investigator.

Comment: Preparation method: in vitro, wheat germ expression system
Product Quality tested by: 12.5% SDS-PAGE Stained with Coomassie Blue.

Restrictions: For Research Use only

Handling

Buffer: 50 mM Tris-HCl, 10 mM reduced Glutathione, pH =8.0 in the elution buffer.

Handling Advice: Aliquot to avoid repeated freezing and thawing.

Storage: -80 °C

Storage Comment: Best use within three months from the date of receipt of this protein.

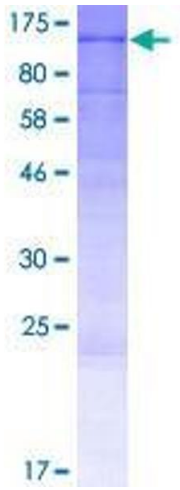


Image 1.