



[Go to Product page](#)

Datasheet for ABIN1345546

## ARHGEF2 Protein (AA 1-959) (GST tag)

### 1 Image

#### Overview

|                               |   |
|-------------------------------|---|
| Quantity:                     | 25 µg   |
| Target:                       | ARHGEF2   |
| Protein Characteristics:      | AA 1-959  |
| Origin:                       | Human   |
| Source:                       | Wheat germ  |
| Protein Type:                 | Recombinant   |
| Purification tag / Conjugate: | This ARHGEF2 protein is labelled with GST tag.                                |
| Application:                  | ELISA, Western Blotting (WB), Antibody Array (AA), Affinity Purification (AP) |

#### Product Details

|           |  |
|-----------|--|
| Purpose:  | ARHGEF2 (Human) Recombinant Protein (P01)  |
| Sequence: | MKEAKDARYT NGHLFTTISV SGMTMCYACN KSITAKEALI CPTCNVTIHN RCKDTLANCT<br>KVKQKQQKAA LLKNNTALQS VSLRSKTTIR ERPSSAIYPS DSFRQSLGSR RGRSSLSLA<br>KSVSTTNIAG HFNDESPLGL RRILSQSTDS LNMRNRTL SV ESLIDEAEVI YSELMDSDFEM<br>DEKDFAADSW SLAVDSSFLQ QHKKEVMKQQ DVIYELIQTE LHHVRTLKIM TRLFRTGMLE<br>ELHLEPGVVQ GLFPCVDELS DIHTRFLSQL LERRRQALCP GSTRNFVIHR LGDLLISQFS<br>GPSAEQMCKT YSEFCSRHSK ALKLYKELYA RDKRFQQFIR KVTRPAVLKR HGVQECILLV<br>TQRITKYPLL ISRILQHSYG IEEERQDLTT ALGLVKELLS NVDEGIYQLE KGARLQEIYN<br>RMDPRAQTPV PGKGPFGREE LLRRKLIHDG CLLWKTATGR FKDVLVLLMT DVLVFLQEKD<br>QKYIFPTLDK PSVVSQNLV VRDIANQEKG MFLISAAPPE MYEVHTASRD DRSTWIRVIQ<br>QSVRTCP SRE DFPLIETEDE AYLRRIKMEL QQKDRALVEL LREKVGLFAE MTHFQAEEDG<br>GSGMALPTLP RGLFRSESLE SPRGERLLQD AIREVEGLKD LLVGPVVELL LTPREPALPL |

## Product Details

---

EPDSGGNTSP GVTANGEART FNGSIELCRA DSDSSQRDRN GNQLRSPQEE ALQRLVNLYG  
LLHGLQAAVA QQDTLMEARF PEGPERREKL CRANSRDGEA GRAGAAPVAP EKQATELALL  
QRQHALLQEE LRRCRRLGEE RATEAGSLEA RLRESEQARA LLEREAEAR RQLAALGQTE  
PLPAEAPWAR RPVDPRRRSL PAGDALYLSF NPPQPSRGTD RLDLPVTTRS VHRNFEDRER  
QELGSPEERL QDSSDPDTGS EEEGSSRLSP PHSPRDFTRM QDIPEETESR DGEAVASES

Characteristics: Human ARHGEF2 full-length ORF ( AAH20567, 1 a.a. - 959 a.a.) recombinant protein with GST-tag at N-terminal.

Purification: in vitro wheat germ expression system

## Target Details

---

Target: ARHGEF2

Alternative Name: ARHGEF2 ([ARHGEF2 Products](#))

Background: Full Gene Name: rho/rac guanine nucleotide exchange factor (GEF) 2  
Synonyms: DKFZp547L106,DKFZp547P1516,GEF,GEF-H1,GEFH1,KIAA0651,LFP40,P40

Gene ID: 9181

Pathways: [Negative Regulation of intrinsic apoptotic Signaling](#)

## Application Details

---

Application Notes: Optimal working dilution should be determined by the investigator.

Comment: Preparation method: in vitro, wheat germ expression system  
Product Quality tested by: 12.5% SDS-PAGE Stained with Coomassie Blue.

Restrictions: For Research Use only

## Handling

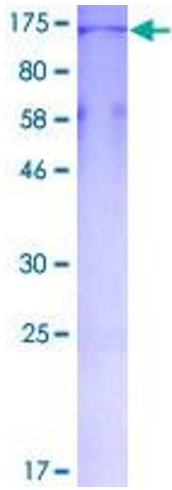
---

Buffer: 50 mM Tris-HCl, 10 mM reduced Glutathione, pH =8.0 in the elution buffer.

Handling Advice: Aliquot to avoid repeated freezing and thawing.

Storage: -80 °C

Storage Comment: Best use within three months from the date of receipt of this protein.



**Image 1.**