



[Go to Product page](#)

Datasheet for ABIN1345547

## ARHGEF2 Protein (AA 860-959) (GST tag)

### 1 Image

#### Overview

Quantity:	10 µg
Target:	ARHGEF2
Protein Characteristics:	AA 860-959
Origin:	Human
Source:	Wheat germ
Protein Type:	Recombinant
Purification tag / Conjugate:	This ARHGEF2 protein is labelled with GST tag.
Application:	ELISA, Western Blotting (WB), Antibody Array (AA), Affinity Purification (AP)

#### Product Details

Purpose:	ARHGEF2 (Human) Recombinant Protein (Q01)
Sequence:	LPAGDALYLS FNPPQPSRGT DRLDLPVTTR SVHRNFEDRE RQELGSPEER LQDSSDPDTG SEEEGSSRLS PPHSPRDFTR MQDIPEETES RDGEAVASES
Characteristics:	Human ARHGEF2 partial ORF ( AAH20567, 860 a.a. - 959 a.a.) recombinant protein with GST-tag at N-terminal.
Purification:	in vitro wheat germ expression system

#### Target Details

Target:	ARHGEF2
Alternative Name:	ARHGEF2 ( <a href="#">ARHGEF2 Products</a> )

## Target Details

Background:	Full Gene Name: rho/rac guanine nucleotide exchange factor (GEF) 2 Synonyms: DKFZp547L106,DKFZp547P1516,GEF,GEF-H1,GEFH1,KIAA0651,LFP40,P40
Gene ID:	9181
Pathways:	<a href="#">Negative Regulation of intrinsic apoptotic Signaling</a>

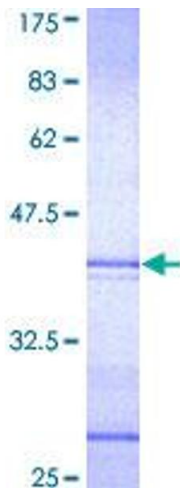
## Application Details

Application Notes:	Optimal working dilution should be determined by the investigator.
Comment:	Preparation method: in vitro, wheat germ expression system Product Quality tested by: 12.5% SDS-PAGE Stained with Coomassie Blue.
Restrictions:	For Research Use only

## Handling

Buffer:	50 mM Tris-HCl, 10 mM reduced Glutathione, pH =8.0 in the elution buffer.
Handling Advice:	Aliquot to avoid repeated freezing and thawing.
Storage:	-80 °C
Storage Comment:	Best use within three months from the date of receipt of this protein.

## Images



**Image 1.**