

Datasheet for ABIN1345549

ARHGEF2 Protein (AA 590-690) (GST tag)



[Go to Product page](#)

1 Image

Overview

Quantity:	10 µg
Target:	ARHGEF2
Protein Characteristics:	AA 590-690
Origin:	Human
Source:	Wheat germ
Protein Type:	Recombinant
Purification tag / Conjugate:	This ARHGEF2 protein is labelled with GST tag.
Application:	ELISA, Western Blotting (WB), Antibody Array (AA), Affinity Purification (AP)

Product Details

Purpose:	ARHGEF2 (Human) Recombinant Protein (Q02)
Sequence:	MTHFQAEEDG GSGMALPTLP RGLFRSESLE SPRGERLLQD AIREVEGLKD LLVGPGVELL LTPREPALPL EPDSGGNTSP GVTANGEART FNGSIELCRA D
Characteristics:	Human ARHGEF2 partial ORF (NP_004714, 590 a.a. - 690 a.a.) recombinant protein with GST-tag at N-terminal.
Purification:	in vitro wheat germ expression system

Target Details

Target:	ARHGEF2
Alternative Name:	ARHGEF2 (ARHGEF2 Products)

Target Details

Background:	Full Gene Name: rho/rac guanine nucleotide exchange factor (GEF) 2 Synonyms: DKFZp547L106,DKFZp547P1516,GEF,GEF-H1,GEFH1,KIAA0651,LFP40,P40
Gene ID:	9181
NCBI Accession:	NM_004723
Pathways:	Negative Regulation of intrinsic apoptotic Signaling

Application Details

Application Notes:	Optimal working dilution should be determined by the investigator.
Comment:	Preparation method: in vitro, wheat germ expression system Product Quality tested by: 12.5% SDS-PAGE Stained with Coomassie Blue.
Restrictions:	For Research Use only

Handling

Buffer:	50 mM Tris-HCl, 10 mM reduced Glutathione, pH =8.0 in the elution buffer.
Handling Advice:	Aliquot to avoid repeated freezing and thawing.
Storage:	-80 °C
Storage Comment:	Best use within three months from the date of receipt of this protein.

Images

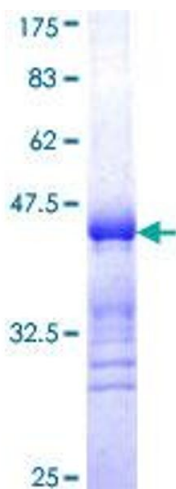


Image 1.