

Datasheet for ABIN1345553
ARHGEF3 Protein (AA 33-142) (GST tag)



[Go to Product page](#)

1 Image

Overview

Quantity:	10 µg
Target:	ARHGEF3
Protein Characteristics:	AA 33-142
Origin:	Human
Source:	Wheat germ
Protein Type:	Recombinant
Purification tag / Conjugate:	This ARHGEF3 protein is labelled with GST tag.
Application:	ELISA, Western Blotting (WB), Antibody Array (AA), Affinity Purification (AP)

Product Details

Purpose:	ARHGEF3 (Human) Recombinant Protein (Q01)
Sequence:	EPSNKRVKPL SRVTS LANLI PPVKATPLKR FSQTLQRSIS FRSESRPDIL APRPWSRNAA PSSTKRRDSK LWSETFDVCV NQMLTSKEIK RQEAIFELSQ GEEDLIEDLK
Characteristics:	Human ARHGEF3 partial ORF (NP_062455, 33 a.a. - 142 a.a.) recombinant protein with GST-tag at N-terminal.
Purification:	in vitro wheat germ expression system

Target Details

Target:	ARHGEF3
Alternative Name:	ARHGEF3 (ARHGEF3 Products)

Target Details

Background:	Full Gene Name: Rho guanine nucleotide exchange factor (GEF) 3 Synonyms: DKFZp434F2429,FLJ98126,GEF3,MGC118905,STA3,XPLN
Gene ID:	50650
NCBI Accession:	NM_019555
Pathways:	Neurotrophin Signaling Pathway

Application Details

Application Notes:	Optimal working dilution should be determined by the investigator.
Comment:	Preparation method: in vitro, wheat germ expression system Product Quality tested by: 12.5% SDS-PAGE Stained with Coomassie Blue.
Restrictions:	For Research Use only

Handling

Buffer:	50 mM Tris-HCl, 10 mM reduced Glutathione, pH =8.0 in the elution buffer.
Handling Advice:	Aliquot to avoid repeated freezing and thawing.
Storage:	-80 °C
Storage Comment:	Best use within three months from the date of receipt of this protein.

Images

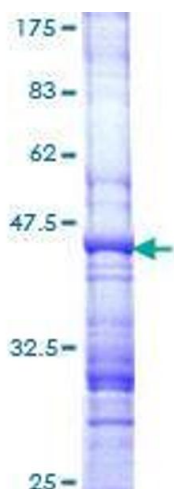


Image 1.