

Datasheet for ABIN1345571

ARID1A Protein (AA 1216-1325) (GST tag)



[Go to Product page](#)

1 Image

Overview

Quantity:	10 µg
Target:	ARID1A
Protein Characteristics:	AA 1216-1325
Origin:	Human
Source:	Wheat germ
Protein Type:	Recombinant
Purification tag / Conjugate:	This ARID1A protein is labelled with GST tag.
Application:	Antibody Array (AA), Affinity Purification (AP), ELISA, Western Blotting (WB)

Product Details

Purpose:	ARID1A (Human) Recombinant Protein (Q01)
Sequence:	NTSDMMGRMS YEPNKDPYGS MRKAPGSDPF MSSGQGPNGG MGDYPYRAAG PGLGNVAMGP RQHYPYGGPY DRVRTEPGIG PEGNMSTGAP QPNLMPSNPD SGMYSRYP
Characteristics:	Human ARID1A partial ORF (NP_006006, 1216 a.a. - 1325 a.a.) recombinant protein with GST-tag at N-terminal.
Purification:	in vitro wheat germ expression system

Target Details

Target:	ARID1A
Alternative Name:	ARID1A (ARID1A Products)

Target Details

Background:	Full Gene Name: AT rich interactive domain 1A (SWI-like) Synonyms: B120,BAF250,BAF250a,BM029,C1orf4,P270,SMARCF1
Gene ID:	8289
NCBI Accession:	NM_006015
Pathways:	Intracellular Steroid Hormone Receptor Signaling Pathway , Tube Formation

Application Details

Application Notes:	Optimal working dilution should be determined by the investigator.
Comment:	Preparation method: in vitro, wheat germ expression system Product Quality tested by: 12.5% SDS-PAGE Stained with Coomassie Blue.
Restrictions:	For Research Use only

Handling

Buffer:	50 mM Tris-HCl, 10 mM reduced Glutathione, pH =8.0 in the elution buffer.
Handling Advice:	Aliquot to avoid repeated freezing and thawing.
Storage:	-80 °C
Storage Comment:	Best use within three months from the date of receipt of this protein.

Images

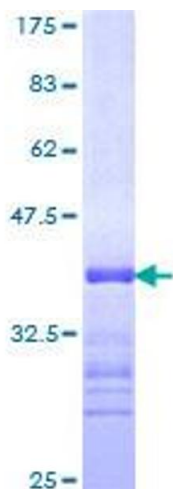


Image 1.