

Datasheet for ABIN1345576

## ARID3A Protein (AA 317-416) (GST tag)



[Go to Product page](#)

### 1 Image

#### Overview

Quantity:	10 µg
Target:	ARID3A
Protein Characteristics:	AA 317-416
Origin:	Human
Source:	Wheat germ
Protein Type:	Recombinant
Purification tag / Conjugate:	This ARID3A protein is labelled with GST tag.
Application:	ELISA, Western Blotting (WB), Antibody Array (AA), Affinity Purification (AP)

#### Product Details

Purpose:	ARID3A (Human) Recombinant Protein (Q01)
Sequence:	QYMKYLYPYE CEKRGLSNPN ELQAAIDSNR REGRRQSFEGG SLFAYSPGGA HGMLSSPKLP VSSLGLAAST NGSSITPAPK IKKEEDSAIP ITVPGRLPVS
Characteristics:	Human ARID3A partial ORF ( NP_005215, 317 a.a. - 416 a.a.) recombinant protein with GST-tag at N-terminal.
Purification:	in vitro wheat germ expression system

#### Target Details

Target:	ARID3A
Alternative Name:	ARID3A ( <a href="#">ARID3A Products</a> )

## Target Details

Background:	Full Gene Name: AT rich interactive domain 3A (BRIGHT-like) Synonyms: BRIGHT,DRIL1,DRIL3,E2FBP1
Gene ID:	1820
NCBI Accession:	<a href="#">NM_005224</a>
Pathways:	<a href="#">Chromatin Binding</a>

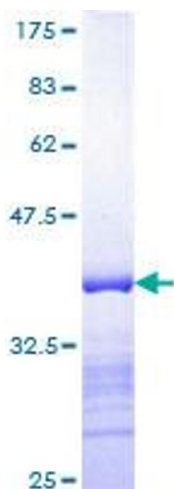
## Application Details

Application Notes:	Optimal working dilution should be determined by the investigator.
Comment:	Preparation method: in vitro, wheat germ expression system Product Quality tested by: 12.5% SDS-PAGE Stained with Coomassie Blue.
Restrictions:	For Research Use only

## Handling

Buffer:	50 mM Tris-HCl, 10 mM reduced Glutathione, pH =8.0 in the elution buffer.
Handling Advice:	Aliquot to avoid repeated freezing and thawing.
Storage:	-80 °C
Storage Comment:	Best use within three months from the date of receipt of this protein.

## Images



**Image 1.**