



Datasheet for ABIN1345595

ARL11 Protein (AA 1-196) (GST tag)



[Go to Product page](#)

1 Image

Overview

Quantity:	10 µg
Target:	ARL11
Protein Characteristics:	AA 1-196
Origin:	Human
Source:	Wheat germ
Protein Type:	Recombinant
Purification tag / Conjugate:	This ARL11 protein is labelled with GST tag.
Application:	ELISA, Western Blotting (WB), Antibody Array (AA), Affinity Purification (AP)

Product Details

Purpose:	ARL11 (Human) Recombinant Protein (P01)
Sequence:	MGSVNSRGHK AEAQVMMGL DSAGKTTLLY KLKGHQLVET LPTVGFNVEP LKAPGHVSLT LWDVGGQAPL RASWKDYLEG TDILVYVLDS TDEARLPESA AELTEVLNDP NMAGVPFLVL ANKQEAPDAL PLLKIRNRLS LERFQDHCWE LRGCSALTGE GLPEALQSLW SLLKSRSCMC LQARAHGAER GDSKRS
Characteristics:	Human ARL11 full-length ORF (NP_612459.1, 1 a.a. - 196 a.a.) recombinant protein with GST-tag at N-terminal.
Purification:	in vitro wheat germ expression system

Target Details

Target:	ARL11
---------	-------

Target Details

Alternative Name:	ARL11 (ARL11 Products)
Background:	Full Gene Name: ADP-ribosylation factor-like 11 Synonyms: ARLTS1,FLJ33930,MGC17429
Gene ID:	115761
NCBI Accession:	NM_138450

Application Details

Application Notes:	Optimal working dilution should be determined by the investigator.
Comment:	Preparation method: in vitro, wheat germ expression system Product Quality tested by: 12.5% SDS-PAGE Stained with Coomassie Blue.
Restrictions:	For Research Use only

Handling

Buffer:	50 mM Tris-HCl, 10 mM reduced Glutathione, pH =8.0 in the elution buffer.
Handling Advice:	Aliquot to avoid repeated freezing and thawing.
Storage:	-80 °C
Storage Comment:	Best use within three months from the date of receipt of this protein.

Images

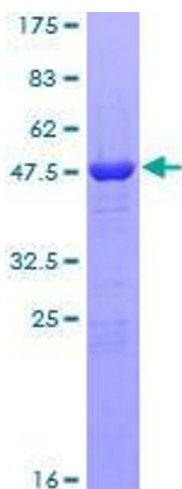


Image 1.