



[Go to Product page](#)

Datasheet for ABIN1345605

ARL2BP Protein (AA 1-163) (GST tag)

1 Image

Overview

Quantity:	10 µg
Target:	ARL2BP
Protein Characteristics:	AA 1-163
Origin:	Human
Source:	Wheat germ
Protein Type:	Recombinant
Purification tag / Conjugate:	This ARL2BP protein is labelled with GST tag.
Application:	ELISA, Western Blotting (WB), Antibody Array (AA), Affinity Purification (AP)

Product Details

Purpose:	ARL2BP (Human) Recombinant Protein (P01)
Sequence:	MDALEGESFA LSFSSASDAE FDAVVGYLEE IIMDDEFQLL QRNFMDKYYL EFEDTEENKL IYTPIFNEYI SLVEKYIEEQ LLQRIPEFNM AAFTTTTLQHH KDEVAGDIFD MLLTFTDFLA FKEMFLDYRA EKEGRGLDLS SGLVVTSLCK SSSLPASQNN LRH
Characteristics:	Human ARL2BP full-length ORF (AAH03087, 1 a.a. - 163 a.a.) recombinant protein with GST-tag at N-terminal.
Purification:	in vitro wheat germ expression system

Target Details

Target:	ARL2BP
Alternative Name:	ARL2BP (ARL2BP Products)

Target Details

Background:	Full Gene Name: ADP-ribosylation factor-like 2 binding protein Synonyms: BART,BART1
Gene ID:	23568
Pathways:	Maintenance of Protein Location

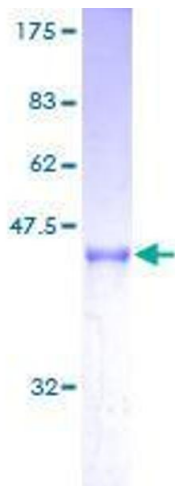
Application Details

Application Notes:	Optimal working dilution should be determined by the investigator.
Comment:	Preparation method: in vitro, wheat germ expression system Product Quality tested by: 12.5% SDS-PAGE Stained with Coomassie Blue.
Restrictions:	For Research Use only

Handling

Buffer:	50 mM Tris-HCl, 10 mM reduced Glutathione, pH =8.0 in the elution buffer.
Handling Advice:	Aliquot to avoid repeated freezing and thawing.
Storage:	-80 °C
Storage Comment:	Best use within three months from the date of receipt of this protein.

Images



SDS-PAGE

Image 1.