



[Go to Product page](#)

Datasheet for ABIN1345608

## ARL4A Protein (AA 1-200) (GST tag)

### 1 Image

#### Overview

Quantity:	10 µg
Target:	ARL4A
Protein Characteristics:	AA 1-200
Origin:	Human
Source:	Wheat germ
Protein Type:	Recombinant
Purification tag / Conjugate:	This ARL4A protein is labelled with GST tag.
Application:	ELISA, Western Blotting (WB), Antibody Array (AA), Affinity Purification (AP)

#### Product Details

Purpose:	ARL4A (Human) Recombinant Protein (P01)
Sequence:	MGNGLSDQTS ILSNLPFSQS FHIVILGLDC AGKTTVLYRL QFNEFVNTVP TKGFNTEKIK VTLGNSKTVT FHFWDVGGQE KLRPLWKSYSY RCTDGIVFVV DSV DVERMEE AKTELHKITR ISENQGV PVL IVANKQDLRN SLSLSEIEKL LAMGELSSST PWHLQPTCAI IGDGLKEGLE KLHDMIKRR KMLRQQKKKR
Characteristics:	Human ARL4A full-length ORF ( AAH01111, 1 a.a. - 200 a.a.) recombinant protein with GST-tag at N-terminal.
Purification:	in vitro wheat germ expression system

#### Target Details

Target:	ARL4A
---------	-------

## Target Details

Alternative Name:	ARL4A ( <a href="#">ARL4A Products</a> )
Background:	Full Gene Name: ADP-ribosylation factor-like 4A Synonyms: ARL4
Gene ID:	10124
Pathways:	<a href="#">Brown Fat Cell Differentiation</a>

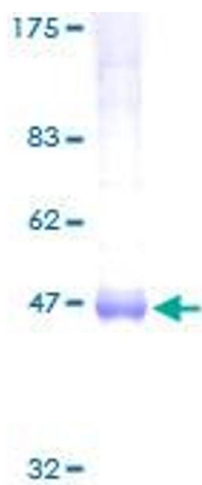
## Application Details

Application Notes:	Optimal working dilution should be determined by the investigator.
Comment:	Preparation method: in vitro, wheat germ expression system Product Quality tested by: 12.5% SDS-PAGE Stained with Coomassie Blue.
Restrictions:	For Research Use only

## Handling

Buffer:	50 mM Tris-HCl, 10 mM reduced Glutathione, pH =8.0 in the elution buffer.
Handling Advice:	Aliquot to avoid repeated freezing and thawing.
Storage:	-80 °C
Storage Comment:	Best use within three months from the date of receipt of this protein.

## Images



### SDS-PAGE

Image 1.