



[Go to Product page](#)

Datasheet for ABIN1345612

## ARL4D Protein (AA 1-201) (GST tag)

### 1 Image

#### Overview

Quantity:	10 µg
Target:	ARL4D
Protein Characteristics:	AA 1-201
Origin:	Human
Source:	Wheat germ
Protein Type:	Recombinant
Purification tag / Conjugate:	This ARL4D protein is labelled with GST tag.
Application:	ELISA, Western Blotting (WB), Antibody Array (AA), Affinity Purification (AP)

#### Product Details

Sequence:	MGNHLEMAP TASSFLPHFQ ALHVVVIGLD SAGKTSLLYR LKFKEFVQSV PTKGFNTEKI RVPLGGSRG I TFQVWDVGGQ EKLRLWRSY TRRTDGLVFV VDAAEAERLE EAKVELHRIS RASDNQGVVPV LVLANKQDQP GALSAAEVEK RLAVRELAAL TLTHVQGCSA VDGLGLQQGL ERLYEMILKR KKAARGGKKR R
-----------	--

#### Target Details

Target:	ARL4D
Alternative Name:	ARL4D ( <a href="#">ARL4D Products</a> )
Background:	Full Gene Name: ADP-ribosylation factor-like 4D Synonyms: ARF4L,ARL6
Gene ID:	379

## Target Details

---

NCBI Accession: [NP\\_001652](#), [NM\\_001661](#)

## Application Details

---

Application Notes: Optimal working dilution should be determined by the investigator.

Comment: Preparation method: in vitro, wheat germ expression system  
Product Quality tested by: 12.5% SDS-PAGE Stained with Coomassie Blue.

Restrictions: For Research Use only

## Handling

---

Buffer: 50 mM Tris-HCl, 10 mM reduced Glutathione, pH =8.0 in the elution buffer.

Handling Advice: Aliquot to avoid repeated freezing and thawing.

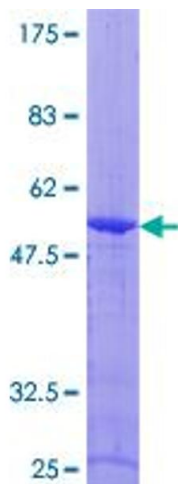
Storage: -80 °C

Storage Comment: Store at -80 °C. Aliquot to avoid repeated freezing and thawing.

Expiry Date: 3 months

## Images

---



**Image 1.**