



[Go to Product page](#)

Datasheet for ABIN1345627

ARL6IP4 Protein (AA 261-360) (GST tag)

1 Image

Overview

Quantity:	10 µg
Target:	ARL6IP4
Protein Characteristics:	AA 261-360
Origin:	Human
Source:	Wheat germ
Protein Type:	Recombinant
Purification tag / Conjugate:	This ARL6IP4 protein is labelled with GST tag.
Application:	ELISA, Western Blotting (WB), Antibody Array (AA), Affinity Purification (AP)

Product Details

Purpose:	ARL6IP4 (Human) Recombinant Protein (Q01)
Sequence:	PGPSLDQWHR SAGEEEDGPV LTDEQKSRIQ AMKPMTKEEW DARQSIIRKV VDPETGRTRL IKGDGEVLEE IVTKERHREI NKQATRGDCL AFQMRAGLLP
Characteristics:	Human ARL6IP4 partial ORF (NP_061164, 261 a.a. - 360 a.a.) recombinant protein with GST-tag at N-terminal.
Purification:	in vitro wheat germ expression system

Target Details

Target:	ARL6IP4
Alternative Name:	ARL6IP4 (ARL6IP4 Products)

Target Details

Background:	Full Gene Name: ADP-ribosylation-like factor 6 interacting protein 4 Synonyms: MGC814,SR-25,SRp25
Gene ID:	51329
NCBI Accession:	NM_018694

Application Details

Application Notes:	Optimal working dilution should be determined by the investigator.
Comment:	Preparation method: in vitro, wheat germ expression system Product Quality tested by: 12.5% SDS-PAGE Stained with Coomassie Blue.
Restrictions:	For Research Use only

Handling

Buffer:	50 mM Tris-HCl, 10 mM reduced Glutathione, pH =8.0 in the elution buffer.
Handling Advice:	Aliquot to avoid repeated freezing and thawing.
Storage:	-80 °C
Storage Comment:	Best use within three months from the date of receipt of this protein.

Images

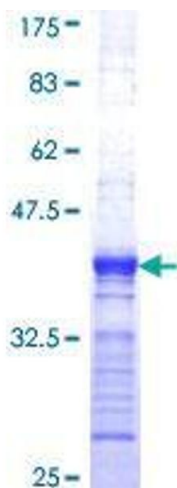


Image 1.