



[Go to Product page](#)

Datasheet for ABIN1345640

ARMC1 Protein (AA 1-282) (GST tag)

1 Image

Overview

Quantity:	10 µg
Target:	ARMC1
Protein Characteristics:	AA 1-282
Origin:	Human
Source:	Wheat germ
Protein Type:	Recombinant
Purification tag / Conjugate:	This ARMC1 protein is labelled with GST tag.
Application:	ELISA, Western Blotting (WB), Antibody Array (AA), Affinity Purification (AP)

Product Details

Purpose:	ARMC1 (Human) Recombinant Protein (P01)
Sequence:	MNSSTSTMSE EPDALSVMNQ LRDLAADPLN RRAIVQDQGC LPGLILFMDH PNPPVWHSAL LALRYLAECR ANREKMKGEL GMMLSLQNV I QKTTTTGETK LLASEIYDIL QSSNMADGDS FNEMNSRRRK AQFFLGTTNK RAKTVVLHID GLDDTSRRNL CEEALLKIKG VISFTFQMAV QRCVVRIRSD LKAEALASAI ASTKVMKAQQ VVKSESGEEM LVPFQDTPVE VEQNTLPDY LPEDESPTKE QDKAVSRVGS HPEGASWLS TAANFLSRSF YW
Characteristics:	Human ARMC1 full-length ORF (AAH11607, 1 a.a. - 282 a.a.) recombinant protein with GST-tag at N-terminal.
Purification:	in vitro wheat germ expression system

Target Details

Target:	ARMC1
Alternative Name:	ARMC1 (ARMC1 Products)
Background:	Full Gene Name: armadillo repeat containing 1 Synonyms: Arcp,FLJ10511
Gene ID:	55156

Application Details

Application Notes:	Optimal working dilution should be determined by the investigator.
Comment:	Preparation method: in vitro, wheat germ expression system Product Quality tested by: 12.5% SDS-PAGE Stained with Coomassie Blue.
Restrictions:	For Research Use only

Handling

Buffer:	50 mM Tris-HCl, 10 mM reduced Glutathione, pH =8.0 in the elution buffer.
Handling Advice:	Aliquot to avoid repeated freezing and thawing.
Storage:	-80 °C
Storage Comment:	Best use within three months from the date of receipt of this protein.

Images

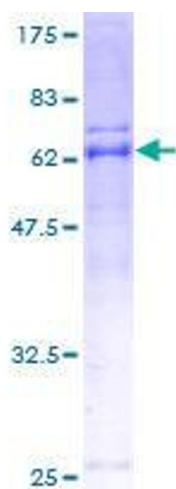


Image 1.