



[Go to Product page](#)

Datasheet for ABIN1345644

## ARMC2 Protein (AA 1-860) (GST tag)

### 1 Image

#### Overview

Quantity:	25 µg
Target:	ARMC2
Protein Characteristics:	AA 1-860
Origin:	Human
Source:	Wheat germ
Protein Type:	Recombinant
Purification tag / Conjugate:	This ARMC2 protein is labelled with GST tag.
Application:	ELISA, Western Blotting (WB), Antibody Array (AA), Affinity Purification (AP)

#### Product Details

Purpose:	ARMC2 (Human) Recombinant Protein (P01)
Sequence:	MLGKLDPFYQ PSVSKQKTS A EIISEARNAL RTVRTQRPFT PQEAQRKLF G PASSRTSENR PPSSFSLHAS SFESSDSRPI SGTRLSPLEL KPKVPASPTR EEDSCFSFPK PPVDPKIRR VSNARARLFR AASQRALLPD RSLPPSDSKK TVESKETVMM GDSMVKINGI YLTKSNAICH LKSHPLQLTD DGGFSEIQEQ EMFKGTTSLP SHLKNGGDQG KRHARASSCP SSSDLSRLQT KAVPKADLQE ED AEIEVDEV FWNTRIVPIL RELEKEENIE TVCAACTQLH HALEEGNMLG NKFKGRSILL KTLCKLVDVG SDSLSLKLAK IILALKVSRK NLLNVCKLIF KISRNEKNDS LIQNDSILES LLEVLRSEDL QTNMEAFLYC MGSIKFISGN LGFLNEMISK GAVEILINLI KQINEDIKKC GTFLPNSGHL LVQVTATLRN LVDSSLVRSK FLNISALPQL CTAMEQYKGD KDVCTNIARI FSKLTSYRDC CTALASYSRC YALFLNLINK YQKKQDLVVR VVFILGNLTA KNNQAREQFS KEKGSIQTLL SLFQTFHQLD LHSQKPVGQR GEQHRAQRPP SEAEDVLIKL TRVLANIAIH PGVGPVLAAN PGIVGLLLTT LEYKSLDDCE ELVINATATI NNLSYYQVKN SIIQDKKLYI

## Product Details

---

AELLKLLVS NNMDGILEAV RVFGNLSQDH DVCDFIVQNN VHRFMMALLD AQHQDICFSA  
CGVLLNLTVD KDKRVILKEG GGIKKLVDCI RDLGPTDWQL ACLVCKTLWN FSENITNASS  
CFGNEDTNTL LLLLSSFLDE ELALDGSFDP DLKNYHKLHW ETEFKPVAQQ LLNRIQRHHT  
FLEPLPIPSF

Characteristics:	Human ARMC2 full-length ORF ( NP_115507.3, 1 a.a. - 860 a.a.) recombinant protein with GST-tag at N-terminal.
Purification:	in vitro wheat germ expression system

## Target Details

---

Target:	ARMC2
Alternative Name:	ARMC2 ( <a href="#">ARMC2 Products</a> )
Background:	Full Gene Name: armadillo repeat containing 2 Synonyms: DKFZp434P0714,RP11-787I22.1,bA787I22.1
Gene ID:	84071
NCBI Accession:	<a href="#">NM_032131</a>

## Application Details

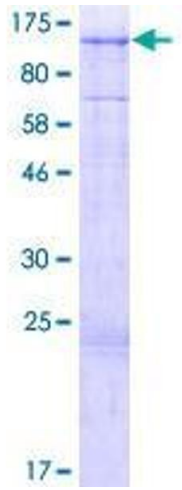
---

Application Notes:	Optimal working dilution should be determined by the investigator.
Comment:	Preparation method: in vitro, wheat germ expression system Product Quality tested by: 12.5% SDS-PAGE Stained with Coomassie Blue.
Restrictions:	For Research Use only

## Handling

---

Buffer:	50 mM Tris-HCl, 10 mM reduced Glutathione, pH =8.0 in the elution buffer.
Handling Advice:	Aliquot to avoid repeated freezing and thawing.
Storage:	-80 °C
Storage Comment:	Best use within three months from the date of receipt of this protein.



**Image 1.**