



[Go to Product page](#)

Datasheet for ABIN1345687

## ARPC1B Protein (AA 1-372) (GST tag)

### 1 Image

#### Overview

Quantity:	10 µg
Target:	ARPC1B
Protein Characteristics:	AA 1-372
Origin:	Human
Source:	Wheat germ
Protein Type:	Recombinant
Purification tag / Conjugate:	This ARPC1B protein is labelled with GST tag.
Application:	ELISA, Western Blotting (WB), Antibody Array (AA), Affinity Purification (AP)

#### Product Details

Purpose:	ARPC1B (Human) Recombinant Protein (P01)
Sequence:	MAYHSFLVEP ISCHAWNKDR TQIAICPNNH EVHIYEKSGA KWTKVHELKE HNGQVTGIDW APESNRIVTC GTDRNAYVWT LKGRTWKPTL VILRINRAAR CVRWAPNENK FAVGSGSRVI SICYFEQEND WWVCKHIKPP IRSTVLSLDW HPNNVLLAAG SCDFKCRIFS AYIKEVEERP APTPWGSKMP FGELMFESS SCGWVHGVCF SASGSRVAWV SHDSTVCLAD ADKKMAVATL ASETLPALLAL TFITDNSLVA AGHDCFPVLF TYDAAAGMLS FGGRLDVPKQ SSQRGLTARE RFQNLDDKKAS SEGGTAAGAG LDSLHKNSVS QISVLSGGKA KCSQFCTTGM DGGMSIWDVK SLESALKDLK IK
Characteristics:	Human ARPC1B full-length ORF ( NP_005711.1, 1 a.a. - 372 a.a.) recombinant protein with GST-tag at N-terminal.
Purification:	in vitro wheat germ expression system

## Target Details

Target:	ARPC1B
Alternative Name:	ARPC1B ( <a href="#">ARPC1B Products</a> )
Background:	Full Gene Name: actin related protein 2/3 complex, subunit 1B, 41 kDa Synonyms: ARC41,p40-ARC,p41-ARC
Gene ID:	10095
NCBI Accession:	<a href="#">NM_005720</a>
Pathways:	<a href="#">RTK Signaling, Regulation of Actin Filament Polymerization</a>

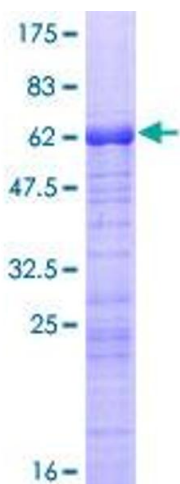
## Application Details

Application Notes:	Optimal working dilution should be determined by the investigator.
Comment:	Preparation method: in vitro, wheat germ expression system Product Quality tested by: 12.5% SDS-PAGE Stained with Coomassie Blue.
Restrictions:	For Research Use only

## Handling

Buffer:	50 mM Tris-HCl, 10 mM reduced Glutathione, pH =8.0 in the elution buffer.
Handling Advice:	Aliquot to avoid repeated freezing and thawing.
Storage:	-80 °C
Storage Comment:	Best use within three months from the date of receipt of this protein.

## Images



**Image 1.**