

Datasheet for ABIN1345709
ARPC5L Protein (AA 1-100) (GST tag)



[Go to Product page](#)

1 Image

Overview

Quantity:	10 µg
Target:	ARPC5L
Protein Characteristics:	AA 1-100
Origin:	Human
Source:	Wheat germ
Protein Type:	Recombinant
Purification tag / Conjugate:	This ARPC5L protein is labelled with GST tag.
Application:	ELISA, Western Blotting (WB), Antibody Array (AA), Affinity Purification (AP)

Product Details

Sequence:	MARNTLSSRF RRVDIDEFDE NKFVDEQEEA AAAAAEPGPD PSEVDGLLRQ GDMLRAFHAA LRNSPVNTKN QAVKERAQGV VLKVLTNFKS SEIEQAVQSL
-----------	--

Target Details

Target:	ARPC5L
Alternative Name:	ARPC5L (ARPC5L Products)
Background:	Full Gene Name: actin related protein 2/3 complex, subunit 5-like Synonyms: ARC16-2,MGC3038
Gene ID:	81873
NCBI Accession:	NP_112240 , NM_030978

Target Details

Pathways: [Regulation of Actin Filament Polymerization](#)

Application Details

Application Notes: Optimal working dilution should be determined by the investigator.

Comment: Preparation method: in vitro, wheat germ expression system
Product Quality tested by: 12.5% SDS-PAGE Stained with Coomassie Blue.

Restrictions: For Research Use only

Handling

Buffer: 50 mM Tris-HCl, 10 mM reduced Glutathione, pH =8.0 in the elution buffer.

Handling Advice: Aliquot to avoid repeated freezing and thawing.

Storage: -80 °C

Storage Comment: Store at -80 °C. Aliquot to avoid repeated freezing and thawing.

Expiry Date: 3 months

Images

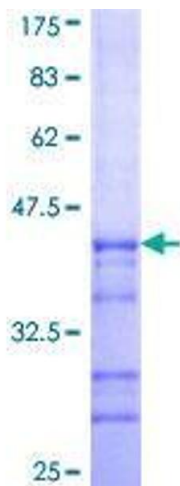


Image 1.