



[Go to Product page](#)

Datasheet for ABIN1345715

## ARPP19 Protein (AA 1-112) (GST tag)

### 1 Image

#### Overview

Quantity:	25 µg
Target:	ARPP19
Protein Characteristics:	AA 1-112
Origin:	Human
Source:	Wheat germ
Protein Type:	Recombinant
Purification tag / Conjugate:	This ARPP19 protein is labelled with GST tag.
Application:	ELISA, Western Blotting (WB), Antibody Array (AA), Affinity Purification (AP)

#### Product Details

Purpose:	ARPP-19 (Human) Recombinant Protein (P01)
Sequence:	MSAEVPEAAS AEEQKEMEDK VTSPEKAEAA KLKARYPHLG QKPGGSDFLR KRLQKGQKYF DSGDYNMAKA KMKNKQLPTA APDKTEVTGD HIPTPQDLPQ RKPSLVASKL AG
Characteristics:	Human ARPP-19 full-length ORF ( AAH03418, 1 a.a. - 112 a.a.) recombinant protein with GST-tag at N-terminal.
Purification:	in vitro wheat germ expression system

#### Target Details

Target:	ARPP19
Alternative Name:	ARPP-19 ( <a href="#">ARPP19 Products</a> )

## Target Details

Background:	Full Gene Name: cyclic AMP phosphoprotein, 19 kD Synonyms: ARPP-16,ARPP16,ARPP19,FLJ41622
Gene ID:	10776
Pathways:	<a href="#">Regulation of Carbohydrate Metabolic Process</a>

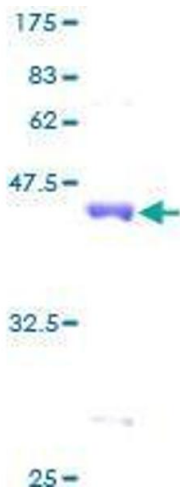
## Application Details

Application Notes:	Optimal working dilution should be determined by the investigator.
Comment:	Preparation method: in vitro, wheat germ expression system Product Quality tested by: 12.5% SDS-PAGE Stained with Coomassie Blue.
Restrictions:	For Research Use only

## Handling

Buffer:	50 mM Tris-HCl, 10 mM reduced Glutathione, pH =8.0 in the elution buffer.
Handling Advice:	Aliquot to avoid repeated freezing and thawing.
Storage:	-80 °C
Storage Comment:	Best use within three months from the date of receipt of this protein.

## Images



**Image 1.**