



[Go to Product page](#)

Datasheet for ABIN1345730

## ARRDC1 Protein (AA 1-433) (GST tag)

### 1 Image

#### Overview

Quantity:	10 µg
Target:	ARRDC1
Protein Characteristics:	AA 1-433
Origin:	Human
Source:	Wheat germ
Protein Type:	Recombinant
Purification tag / Conjugate:	This ARRDC1 protein is labelled with GST tag.
Application:	ELISA, Western Blotting (WB), Antibody Array (AA), Affinity Purification (AP)

#### Product Details

Purpose:	ARRDC1 (Human) Recombinant Protein (P01)
Sequence:	MGRVQLFEIS LSHGRVVYSP GEPLAGTVRV RLGAPLPFRA IRVTCIGSCG VSNKANDTAW VVEEGYFNSS LSLADKGLP AGEHSFPFQF LLPATAPTSF EGPFGKIVHQ VRAAIHTPRF SKDHKCSLVF YILSPLNLNS IPDIEQPNVA SATKKFSYKL VKTGSVVLTA STDLRGYVVG QALQLHADVE NQSGKDTSPV VASLLQKVS Y KAKRWIHDVR TIAEVEGAGV KAWRRAQWHE QILVPALPQS ALPGCSLIHI DYLLQVSLKA PEATVTLPVF IGNIAVNHAP VSPRPLGLP PGAPPLVPS APPQEEAEAE AAAGGPHFLD PVFLSTKSHS QRQPLLATLS SVPGAPEPCP QDGSPASHPL HPPLCISTGA TVPYFAEGSG GPVPTTSTLI LPPEYSSWGY PYEAPPSYEQ SCGGVEPSLT PES
Characteristics:	Human ARRDC1 full-length ORF ( NP_689498.1, 1 a.a. - 433 a.a.) recombinant protein with GST-tag at N-terminal.

## Product Details

---

Purification: in vitro wheat germ expression system

## Target Details

---

Target: ARRDC1

Alternative Name: ARRDC1 ([ARRDC1 Products](#))

Background: Full Gene Name: arrestin domain containing 1  
Synonyms: MGC40555

Gene ID: 92714

NCBI Accession: [NM\\_152285](#)

## Application Details

---

Application Notes: Optimal working dilution should be determined by the investigator.

Comment: Preparation method: in vitro, wheat germ expression system  
Product Quality tested by: 12.5% SDS-PAGE Stained with Coomassie Blue.

Restrictions: For Research Use only

## Handling

---

Buffer: 50 mM Tris-HCl, 10 mM reduced Glutathione, pH =8.0 in the elution buffer.

Handling Advice: Aliquot to avoid repeated freezing and thawing.

Storage: -80 °C

Storage Comment: Best use within three months from the date of receipt of this protein.

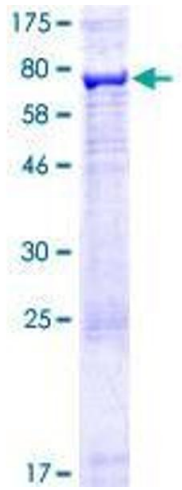


Image 1.