



[Go to Product page](#)

Datasheet for ABIN1345753

Arylsulfatase H Protein (ARSH) (AA 1-562) (GST tag)

1 Image

Overview

Quantity:	10 µg
Target:	Arylsulfatase H (ARSH)
Protein Characteristics:	AA 1-562
Origin:	Human
Source:	Wheat germ
Protein Type:	Recombinant
Purification tag / Conjugate:	This Arylsulfatase H protein is labelled with GST tag.
Application:	ELISA, Western Blotting (WB), Antibody Array (AA), Affinity Purification (AP)

Product Details

Purpose:	ARSH (Human) Recombinant Protein (P01)
Sequence:	MTRNARPNIV LLMADDLGVG DLCCYGNN SV STPNIDRLAS EGVRLTQHLA AASMCTPSRA AFLTGRYPPIR SGMVSAAYNLN RAFTWLGGSG GLPTNETTFA KLLQHRGYRT GLIGKWHLGL SCASRNDHCY HPLNHGFHYF YGVPFGLLSD CQASKTPELH RWLRIKLWIS TVALALVPFL LLIPKFARWF SVPWKVIVVF ALLAFLLFFTS WYSSYGFTRR WNCILMRNHE IIQQPMKEEK VASLMLKEAL AFIERYKREP FLLFFSFLHV HTPLISKKKF VGRSKYGRYG DNVEEMDWMV GKILDALDQE RLANHTLVYF TSDNGGHLEP LDGAVQLGGW NGIYKGGKGM GGWEGGIRVP GIFRWPSVLE AGRVINEPTS LMDIYPTLSY IGGGILSQDR VIDGQNL MPL LEGRASHSDH EFLFHYCGVY LHTVRWHQKD CATVWKAHYV TPKFYPEGTG ACYGSGICSC SGDVTYHDPP LLFDISRDP S EALPLNPDNE PLFDSVIKMM EAAIREHRRT LTPVPQQFSV FNTIWKPWLQ PCCGTFPFCG CDKEDDILPM AP
Characteristics:	Human ARSH full-length ORF (AAI53086.1, 1 a.a. - 562 a.a.) recombinant protein with GST-tag

Product Details

at N-terminal.

Purification: in vitro wheat germ expression system

Target Details

Target: Arylsulfatase H (ARSH)

Alternative Name: ARSH ([ARSH Products](#))

Background: Full Gene Name: arylsulfatase family, member H
Synonyms: sulfatase

Gene ID: 347527

Application Details

Application Notes: Optimal working dilution should be determined by the investigator.

Comment: Preparation method: in vitro, wheat germ expression system
Product Quality tested by: 12.5% SDS-PAGE Stained with Coomassie Blue.

Restrictions: For Research Use only

Handling

Buffer: 50 mM Tris-HCl, 10 mM reduced Glutathione, pH =8.0 in the elution buffer.

Handling Advice: Aliquot to avoid repeated freezing and thawing.

Storage: -80 °C

Storage Comment: Best use within three months from the date of receipt of this protein.

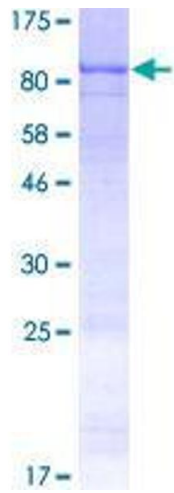


Image 1.