



[Go to Product page](#)

Datasheet for ABIN1345755

ARSJ Protein (AA 1-85) (GST tag)

1 Image

Overview

Quantity:	10 µg
Target:	ARSJ
Protein Characteristics:	AA 1-85
Origin:	Human
Source:	Wheat germ
Protein Type:	Recombinant
Purification tag / Conjugate:	This ARSJ protein is labelled with GST tag.
Application:	ELISA, Western Blotting (WB), Antibody Array (AA), Affinity Purification (AP)

Product Details

Purpose:	ARSJ (Human) Recombinant Protein (P01)
Sequence:	MAPGQQAMGS GTLQSSQPSE CSTGNCLQEI LATATGSPLS LSATWDRTGG TMNGSPCQLA KVYGFSTSQP THMRGWTYLT GIQES
Characteristics:	Human ARSJ full-length ORF (AAH32010.1, 1 a.a. - 85 a.a.) recombinant protein with GST-tag at N-terminal.
Purification:	in vitro wheat germ expression system

Target Details

Target:	ARSJ
Alternative Name:	ARSJ (ARSJ Products)

Target Details

Background: Full Gene Name: arylsulfatase family, member J
Synonyms: FLJ23548

Gene ID: 79642

Application Details

Application Notes: Optimal working dilution should be determined by the investigator.

Comment: Preparation method: in vitro, wheat germ expression system
Product Quality tested by: 12.5% SDS-PAGE Stained with Coomassie Blue.

Restrictions: For Research Use only

Handling

Buffer: 50 mM Tris-HCl, 10 mM reduced Glutathione, pH =8.0 in the elution buffer.

Handling Advice: Aliquot to avoid repeated freezing and thawing.

Storage: -80 °C

Storage Comment: Best use within three months from the date of receipt of this protein.

Images

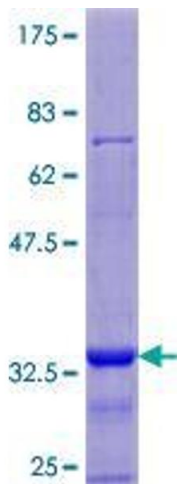


Image 1.