



[Go to Product page](#)

Datasheet for ABIN1345775

## Arx Protein (AA 159-264) (GST tag)

### 1 Image

#### Overview

Quantity:	10 µg
Target:	Arx (ARX)
Protein Characteristics:	AA 159-264
Origin:	Human
Source:	Wheat germ
Protein Type:	Recombinant
Purification tag / Conjugate:	This Arx protein is labelled with GST tag.
Application:	ELISA, Western Blotting (WB), Antibody Array (AA), Affinity Purification (AP)

#### Product Details

Purpose:	ARX (Human) Recombinant Protein
Sequence:	LKISQAPQVS ISRSKSYREN GAPFVPPPPA LDELGGPGGV THPEERLGVA GGPGSAPAAG GGTGTEDEE ELLEDEEDED EEEELLEDEE EELLEDDARA LLKEPR
Characteristics:	Human ARX partial ORF (NP_620689, 159 a.a. - 264 a.a.) recombinant protein with GST-tag at N-terminal.
Purification:	in vitro wheat germ expression system

#### Target Details

Target:	Arx (ARX)
Alternative Name:	ARX ( <a href="#">ARX Products</a> )

## Target Details

---

Background:	Full Gene Name: aristaless related homeobox Synonyms: ISSX,MRX29,MRX32,MRX33,MRX36,MRX38,MRX43,MRX54,MRX76,MRX87,MRXS1,PRTS
Gene ID:	170302
NCBI Accession:	<a href="#">NM_139058</a>

## Application Details

---

Application Notes:	Optimal working dilution should be determined by the investigator.
Comment:	Preparation method: in vitro, wheat germ expression system Product Quality tested by: 12.5% SDS-PAGE Stained with Coomassie Blue
Restrictions:	For Research Use only

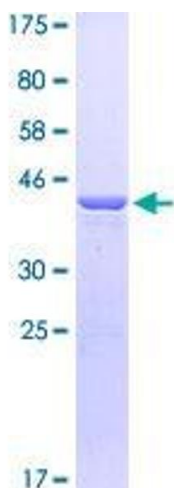
## Handling

---

Buffer:	50 mM Tris-HCl, 10 mM reduced Glutathione, pH =8.0 in the elution buffer.
Handling Advice:	Aliquot to avoid repeated freezing and thawing.
Storage:	-80 °C
Storage Comment:	Best use within three months from the date of receipt of this protein.

## Images

---



**Image 1.**