

Datasheet for ABIN1345785  
**ASAP1 Protein (AA 1030-1129) (GST tag)**



[Go to Product page](#)

1 Image

Overview

Quantity:	10 µg
Target:	ASAP1
Protein Characteristics:	AA 1030-1129
Origin:	Human
Source:	Wheat germ
Protein Type:	Recombinant
Purification tag / Conjugate:	This ASAP1 protein is labelled with GST tag.
Application:	ELISA, Western Blotting (WB), Antibody Array (AA), Affinity Purification (AP)

Product Details

Purpose:	DDEF1 (Human) Recombinant Protein (Q01)
Sequence:	VQSRDAIQKQ ASEDNDLTP TLPETPVPLP RKINTGKNKV RRVKTIYDCQ ADNDDDELTFI EGEVIIVTGE EDQEWVWIGHI EGQPERKGVF PVSFVHILSD
Characteristics:	Human DDEF1 partial ORF ( NP_060952, 1030 a.a. - 1129 a.a.) recombinant protein with GST-tag at N-terminal.
Purification:	in vitro wheat germ expression system

Target Details

Target:	ASAP1
Alternative Name:	ASAP1 ( <a href="#">ASAP1 Products</a> )

## Target Details

Background:	Full Gene Name: ArfGAP with SH3 domain, ankyrin repeat and PH domain 1 Synonyms: AMAP1,CENTB4,DDEF1,KIAA1249,PAG2,PAP,ZG14P
Gene ID:	50807
NCBI Accession:	<a href="#">NM_018482</a>

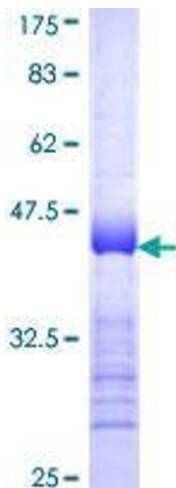
## Application Details

Application Notes:	Optimal working dilution should be determined by the investigator.
Comment:	Preparation method: in vitro, wheat germ expression system Product Quality tested by: 12.5% SDS-PAGE Stained with Coomassie Blue.
Restrictions:	For Research Use only

## Handling

Buffer:	50 mM Tris-HCl, 10 mM reduced Glutathione, pH =8.0 in the elution buffer.
Handling Advice:	Aliquot to avoid repeated freezing and thawing.
Storage:	-80 °C
Storage Comment:	Best use within three months from the date of receipt of this protein.

## Images



**Image 1.**