



[Go to Product page](#)

Datasheet for ABIN1345791

ASAP3 Protein (AA 1-903) (GST tag)

1 Image

Overview

Quantity:	10 µg
Target:	ASAP3
Protein Characteristics:	AA 1-903
Origin:	Human
Source:	Wheat germ
Protein Type:	Recombinant
Purification tag / Conjugate:	This ASAP3 protein is labelled with GST tag.
Application:	ELISA, Western Blotting (WB), Antibody Array (AA), Affinity Purification (AP)

Product Details

Purpose:	DDEFL1 (Human) Recombinant Protein (P01)
Sequence:	MPEQFSVAEF LAVTAEDLSS PAGAAFAAK MPRYRGAALA REEILEGDQA ILQRIKKAVR AIHSSGLGHV ENEEQYREAV ESLGNSHLSQ NSHELSTGFL NLAVFTREVA ALFKNLIQNL NNIVSFPLDS LMKGQLRDGR QDSKKQLEKA WKDYEAQMAK LEKERDRARV TGGIPGEVAQ DMQRERRIFQ LHMCEYLLKA GESQMKQGPD FLQSLIKFFH AQHNFFQDGW KAAQSLFPFI EKLAASVHAL HQAQEDDELQK LTQLRDSLRLG TLQLESREEH LSRKNSGCGY SIHQHQGNKQ FGTEKVGFLY KKS DGIRRVW QKRKCGVKYG CLTISHSTIN RPPVKLTLT CQVRPNPEEK KCFDLVTHNR TYHFQAEDEH ECEAWVSVLQ NSKDEALSSA FLGEPSAGPG SWGSAGHDGE PHDLTKLLIA EVKSRPGNSQ CCDCGAADPT WLSTNLGVL TCIQCSGVHRE LGVRF SRMQS LTLDLLGPSE LLLALNMGNT SFNEVMEAQL PSHGGPKPSA ESDMGTRRDY IMAKYVEHRF ARRCTPEPQR LWTAICNRDL LSVLEAFANG QDFGQPLPGP DAQAPEELVL HLAVKVANQA SLPLVDFIIQ NGGHLDAAKAA DGNTALHYAA LYNQPDCLKL LLKGRALVGT VNEAGETALD

Product Details

IARKKHHKEC EELLEQAQAG TFAFPLHVDY SWVISTEPGS DSEEDDEEKR CLLKLPAQAH
WASGRLDISN KTYETVASLG AATPQGESED CPPPLPVKNS SRTLQVGCAR HASGDRSEVS
SLSSEAPETP ESLGSPASSS SLMSPLEPGD PSQAPPNSEE GLREPPGTSR PSLTSGTTPS
EMYLPRVFSS ESTRSYRRGA RSPEDGPSAR QPLPRRNPV GITEGDGSRT GSLPASSVQL LQD

Characteristics: Human DDEF1 full-length ORF (NP_060177.2, 1 a.a. - 903 a.a.) recombinant protein with GST-tag at N-terminal.

Purification: in vitro wheat germ expression system

Target Details

Target: ASAP3

Alternative Name: ASAP3 ([ASAP3 Products](#))

Background: Full Gene Name: ArfGAP with SH3 domain, ankyrin repeat and PH domain 3
Synonyms: ACAP4,CENTB6,DDEF1,FLJ20199,UPLC1

Gene ID: 55616

NCBI Accession: [NM_017707](#)

Application Details

Application Notes: Optimal working dilution should be determined by the investigator.

Comment: Preparation method: in vitro, wheat germ expression system
Product Quality tested by: 12.5% SDS-PAGE Stained with Coomassie Blue.

Restrictions: For Research Use only

Handling

Buffer: 50 mM Tris-HCl, 10 mM reduced Glutathione, pH =8.0 in the elution buffer.

Handling Advice: Aliquot to avoid repeated freezing and thawing.

Storage: -80 °C

Storage Comment: Best use within three months from the date of receipt of this protein.

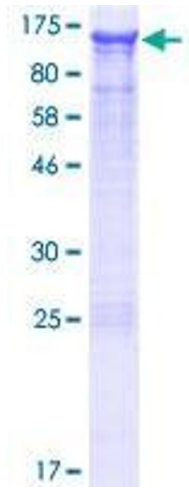


Image 1.