

Datasheet for ABIN1345797
ASB11 Protein (GST tag)



[Go to Product page](#)

1 Image

Overview

Quantity:	10 µg
Target:	ASB11
Origin:	Human
Source:	Wheat germ
Protein Type:	Recombinant
Purification tag / Conjugate:	This ASB11 protein is labelled with GST tag.
Application:	ELISA, Western Blotting (WB), Antibody Array (AA), Affinity Purification (AP)

Product Details

Purpose:	ASB11 (Human) Recombinant Protein (P01)
Sequence:	MEDGPFVYGF KNIFITMFAT FFFFKLLIKV FLALLTHFYI VKGNRKEAAR IAEEIYGGIS DCWADRSLPH EAAAQGRLLA LKTLIAQGVN VNLVTINRVS SLHEACLGGH VACAKALLEN GAHVNGVTVH GATPLFNACC SGSAACVNVL LEFGAKAQLV VHLASPIHEA VKRGHRECME ILLANNVNID HEVPQLGTPL YVACTYQRVD CVKKLLELGA SVDHGQWLDT PLHAAARQSN VEVIHLLTDY GANLKRRNAQ GKSALDLAAP KSSVEQALLL REGPPALSQL CRLCVRKCLG RACHQAIHKL HLPEPLERFL LYQ
Characteristics:	Human ASB11 full-length ORF (NP_543149.1, 1 a.a. - 323 a.a.) recombinant protein with GST-tag at N-terminal.
Purification:	in vitro wheat germ expression system

Target Details

Target:	ASB11
Alternative Name:	ASB11 (ASB11 Products)
Background:	Gene: ankyrin repeat and SOCS box-containing 11 Synonyms: DKFZp779E2460, MGC119168, MGC119169
Gene ID:	140456
NCBI Accession:	NM_080873

Application Details

Application Notes:	Optimal working dilution should be determined by the investigator.
Restrictions:	For Research Use only

Handling

Buffer:	50 mM Tris-HCl, 10 mM reduced Glutathione, pH =8.0 in the elution buffer.
Handling Advice:	Aliquot to avoid repeated freezing and thawing.
Storage:	-80 °C
Storage Comment:	Best use within three months from the date of receipt of this protein.

Images

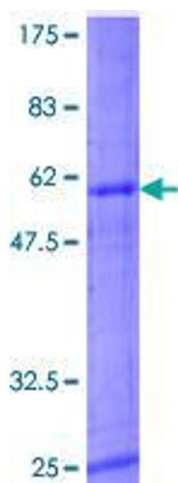


Image 1.