



[Go to Product page](#)

Datasheet for ABIN1345815

ASB6 Protein (AA 1-197) (GST tag)

1 Image

Overview

Quantity:	10 µg
Target:	ASB6
Protein Characteristics:	AA 1-197
Origin:	Human
Source:	Wheat germ
Protein Type:	Recombinant
Purification tag / Conjugate:	This ASB6 protein is labelled with GST tag.
Application:	ELISA, Western Blotting (WB), Antibody Array (AA), Affinity Purification (AP)

Product Details

Purpose:	ASB6 (Human) Recombinant Protein (P01)
Sequence:	MPFLHGFRRRI IFEYQPLVDA IPGSLGIQDP ERQESLDRPS YVASEESRIL VLTELLERKA HSPFYQEGVS NALLKMAELG LTRAADVLLR HGANLNFEDP VTYYTALHIA VLRNQPDMVE LLVHHGADVN RRDREKLLCS MLWPAATGCR STILRTFVS YWKEGQTSRPP PKMGTQCSPA SSSCLVRPWE GTKRRPR
Characteristics:	Human ASB6 full-length ORF (AAH01719, 1 a.a. - 197 a.a.) recombinant protein with GST-tag at N-terminal.
Purification:	in vitro wheat germ expression system

Target Details

Target:	ASB6
---------	------

Target Details

Alternative Name:	ASB6 (ASB6 Products)
Background:	Full Gene Name: ankyrin repeat and SOCS box-containing 6 Synonyms: FLJ20548,MGC1024
Gene ID:	140459

Application Details

Application Notes:	Optimal working dilution should be determined by the investigator.
Comment:	Preparation method: in vitro, wheat germ expression system Product Quality tested by: 12.5% SDS-PAGE Stained with Coomassie Blue.
Restrictions:	For Research Use only

Handling

Buffer:	50 mM Tris-HCl, 10 mM reduced Glutathione, pH =8.0 in the elution buffer.
Handling Advice:	Aliquot to avoid repeated freezing and thawing.
Storage:	-80 °C
Storage Comment:	Best use within three months from the date of receipt of this protein.

Images

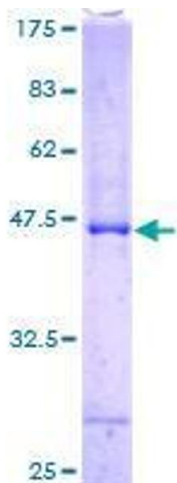


Image 1.