

Datasheet for ABIN1345823
ASB8 Protein (AA 179-288) (GST tag)



[Go to Product page](#)

1 Image

Overview

Quantity:	10 µg
Target:	ASB8
Protein Characteristics:	AA 179-288
Origin:	Human
Source:	Wheat germ
Protein Type:	Recombinant
Purification tag / Conjugate:	This ASB8 protein is labelled with GST tag.
Application:	ELISA, Western Blotting (WB), Antibody Array (AA), Affinity Purification (AP)

Product Details

Sequence:	VINLIGQTPI SRLVALLVRG LGTEKEDSCF ELLHRAVGHF ELRKNGTMPR EVARDPQLCE KLTVLCSAPG TLKTLARYAV RRSGLGLQYLP DAVKGLPLPA SLKEYLLLLL
-----------	--

Target Details

Target:	ASB8
Alternative Name:	ASB8 (ASB8 Products)
Background:	Full Gene Name: ankyrin repeat and SOCS box-containing 8 Synonyms: FLJ21255,MGC5540,PP14212
Gene ID:	140461
NCBI Accession:	NP_077000 , NM_024095

Application Details

Application Notes:	Optimal working dilution should be determined by the investigator.
Comment:	Preparation method: in vitro, wheat germ expression system Product Quality tested by: 12.5% SDS-PAGE Stained with Coomassie Blue.
Restrictions:	For Research Use only

Handling

Buffer:	50 mM Tris-HCl, 10 mM reduced Glutathione, pH =8.0 in the elution buffer.
Handling Advice:	Aliquot to avoid repeated freezing and thawing.
Storage:	-80 °C
Storage Comment:	Store at -80 °C. Aliquot to avoid repeated freezing and thawing.
Expiry Date:	3 months

Images

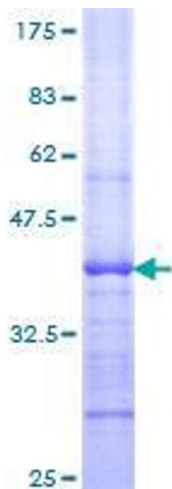


Image 1.