

Datasheet for ABIN1345833  
**ASCL1 Protein (AA 1-236) (GST tag)**



[Go to Product page](#)

1 Image

Overview

Quantity:	25 µg
Target:	ASCL1
Protein Characteristics:	AA 1-236
Origin:	Human
Source:	Wheat germ
Protein Type:	Recombinant
Purification tag / Conjugate:	This ASCL1 protein is labelled with GST tag.
Application:	ELISA, Western Blotting (WB), Antibody Array (AA), Affinity Purification (AP)

Product Details

Purpose:	ASCL1 (Human) Recombinant Protein (P01)
Sequence:	MESSAKMESG GAGQQPQPQP QQPFLPPAAC FFATAAAAAA AAAAAAQA QQQQQQQQQ QQAPQLRPAA DGQPSGGGHK SAPKQVKRQR SSSPELMRCK RRLNFSGFGY SLPQQQPAAV ARRNERERNR VKLVNLGFAT LREHVPNGAA NKKMSKVETL RSAVEYIRAL QQLLDEHDAV SAAFQAGVLS PTISPNYSND LNSMAGSPVS SYSSDEGSYD PLSPEEQELL DFTNWF
Characteristics:	Human ASCL1 full-length ORF ( NP_004307.2, 1 a.a. - 236 a.a.) recombinant protein with GST-tag at N-terminal.
Purification:	in vitro wheat germ expression system

Target Details

Target:	ASCL1
---------	-------

## Target Details

Alternative Name:	ASCL1 ( <a href="#">ASCL1 Products</a> )
Background:	Full Gene Name: achaete-scute complex homolog 1 (Drosophila) Synonyms: ASH1,HASH1,MASH1,bHLHa46
Gene ID:	429
NCBI Accession:	<a href="#">NM_004316</a>
Pathways:	<a href="#">Dopaminergic Neurogenesis</a>

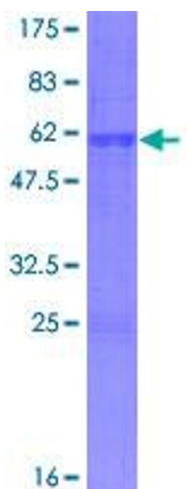
## Application Details

Application Notes:	Optimal working dilution should be determined by the investigator.
Comment:	Preparation method: in vitro, wheat germ expression system Product Quality tested by: 12.5% SDS-PAGE Stained with Coomassie Blue.
Restrictions:	For Research Use only

## Handling

Buffer:	50 mM Tris-HCl, 10 mM reduced Glutathione, pH =8.0 in the elution buffer.
Handling Advice:	Aliquot to avoid repeated freezing and thawing.
Storage:	-80 °C
Storage Comment:	Best use within three months from the date of receipt of this protein.

## Images



**Image 1.**