

Datasheet for ABIN1345879

Aspartate beta Hydroxylase Protein (AA 161-270) (GST tag)[Go to Product page](#)**1** Image

Overview

Quantity:	10 µg
Target:	Aspartate beta Hydroxylase (ASPH)
Protein Characteristics:	AA 161-270
Origin:	Human
Source:	Wheat germ
Protein Type:	Recombinant
Purification tag / Conjugate:	This Aspartate beta Hydroxylase protein is labelled with GST tag.
Application:	Western Blotting (WB), ELISA, Antibody Array (AA), Affinity Purification (AP)

Product Details

Purpose:	ASPH (Human) Recombinant Protein (Q01)
Sequence:	PTGEPQQEDD EFLMATDVDD RFETLEPEVS HEETESYHV EETVSQDCNQ DMEEMMSEQE NPDSSEPVVE DERLHHTDD VTYQVYEEQA VYEPLENEGI EITEVTAPPE
Characteristics:	Human ASPH partial ORF (NP_115857, 161 a.a. - 270 a.a.) recombinant protein with GST-tag at N-terminal.
Purification:	in vitro wheat germ expression system

Target Details

Target:	Aspartate beta Hydroxylase (ASPH)
Alternative Name:	ASPH (ASPH Products)

Target Details

Background:	Full Gene Name: aspartate beta-hydroxylase Synonyms: BAH,CASQ2BP1,HAAH,JCTN,junctin
Gene ID:	444
NCBI Accession:	NM_032468
Pathways:	Positive Regulation of Endopeptidase Activity

Application Details

Application Notes:	Optimal working dilution should be determined by the investigator.
Comment:	Preparation method: in vitro, wheat germ expression system Product Quality tested by: 12.5% SDS-PAGE Stained with Coomassie Blue.
Restrictions:	For Research Use only

Handling

Buffer:	50 mM Tris-HCl, 10 mM reduced Glutathione, pH =8.0 in the elution buffer.
Handling Advice:	Aliquot to avoid repeated freezing and thawing.
Storage:	-80 °C
Storage Comment:	Best use within three months from the date of receipt of this protein.

Images

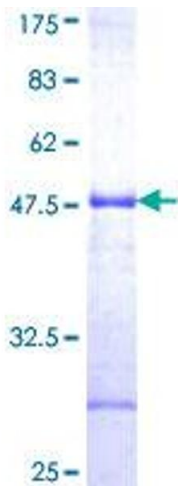


Image 1.