



[Go to Product page](#)

Datasheet for ABIN1345881

ASPHD1 Protein (AA 1-390) (GST tag)

1 Image

Overview

Quantity:	25 µg
Target:	ASPHD1
Protein Characteristics:	AA 1-390
Origin:	Human
Source:	Wheat germ
Protein Type:	Recombinant
Purification tag / Conjugate:	This ASPHD1 protein is labelled with GST tag.
Application:	ELISA, Western Blotting (WB), Antibody Array (AA), Affinity Purification (AP)

Product Details

Purpose:	ASPHD1 (Human) Recombinant Protein (P01)
Sequence:	MKEGRGSFSV ERGPRKERET AQSGMWKGNS PAGESQGAAME GTGGELGGQG NWGPEDAPGL LARASLIMLP WPLPLASSAL TLLFGALTSL FLWYCYRLGS QDMQALGAGS RAGGVRGGPV GCSEAGGPSP GPGDPEGEP RTEGLVSRRL RAYARRYSWA GMGRVRRAAQ GPGPGRGPG VLGIQRPGLL FLPDLPSAPF VPRDAQRHVDV ELLESSFPAI LRDFGAVSWD FSGTTPPPRG WSPPLAPGCY QLLLYQAGRC QPSNCRRCPG AYRALRGLRS FMSANTFGNA GFSVLLPGAR LEGRCGPTNA RVRCHLGLKI PPGCELVVGG EPQCWAEGHC LLVDDSFLHT VAHNGSPEDG PRVVFIVDLW HPNVAGAERQ ALDFVFAPDP
Characteristics:	Human ASPHD1 full-length ORF (NP_859069.2, 1 a.a. - 390 a.a.) recombinant protein with GST-tag at N-terminal.
Purification:	in vitro wheat germ expression system

Target Details

Target:	ASPHD1
Alternative Name:	ASPHD1 (ASPHD1 Products)
Background:	Full Gene Name: aspartate beta-hydroxylase domain containing 1 Synonyms:
Gene ID:	253982
NCBI Accession:	NM_181718

Application Details

Application Notes:	Optimal working dilution should be determined by the investigator.
Comment:	Preparation method: in vitro, wheat germ expression system Product Quality tested by: 12.5% SDS-PAGE Stained with Coomassie Blue.
Restrictions:	For Research Use only

Handling

Buffer:	50 mM Tris-HCl, 10 mM reduced Glutathione, pH =8.0 in the elution buffer.
Handling Advice:	Aliquot to avoid repeated freezing and thawing.
Storage:	-80 °C
Storage Comment:	Best use within three months from the date of receipt of this protein.

Images

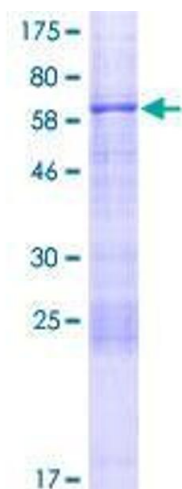


Image 1.