



[Go to Product page](#)

Datasheet for ABIN1345896

## ASS1 Protein (AA 121-220) (GST tag)

### 1 Image

#### Overview

Quantity:	10 µg
Target:	ASS1
Protein Characteristics:	AA 121-220
Origin:	Human
Source:	Wheat germ
Protein Type:	Recombinant
Purification tag / Conjugate:	This ASS1 protein is labelled with GST tag.
Application:	Western Blotting (WB), ELISA, Antibody Array (AA), Affinity Purification (AP)

#### Product Details

Purpose:	ASS (Human) Recombinant Protein (Q01)
Sequence:	KGNDQVRFEL SCYSLAPQIK VIAPWRMPEF YNRFKGRNDL MEYAKQHGIP IPVTPKNPWS MDENLMHISY EAGILENPKN QAPPGLYTKT QDPAKAPNTP
Characteristics:	Human ASS partial ORF ( NP_000041.2, 121 a.a. - 220 a.a.) recombinant protein with GST-tag at N-terminal.
Purification:	in vitro wheat germ expression system

#### Target Details

Target:	ASS1
Alternative Name:	ASS1 ( <a href="#">ASS1 Products</a> )

## Target Details

Background: Gene: argininosuccinate synthetase 1  
Synonyms: ASS, CTLN1

Gene ID: 445

NCBI Accession: [NM\\_000050](#)

Pathways: [Response to Growth Hormone Stimulus](#), [Cellular Response to Molecule of Bacterial Origin](#)

## Application Details

Application Notes: Optimal working dilution should be determined by the investigator.

Restrictions: For Research Use only

## Handling

Buffer: 50 mM Tris-HCl, 10 mM reduced Glutathione, pH =8.0 in the elution buffer.

Handling Advice: Aliquot to avoid repeated freezing and thawing.

Storage: -80 °C

Storage Comment: Best use within three months from the date of receipt of this protein.

## Images

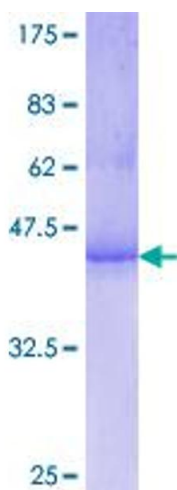


Image 1.