

Datasheet for ABIN1345898
ASTE1 Protein (AA 1-679) (GST tag)



[Go to Product page](#)

1 Image

Overview

Quantity:	25 µg
Target:	ASTE1
Protein Characteristics:	AA 1-679
Origin:	Human
Source:	Wheat germ
Protein Type:	Recombinant
Purification tag / Conjugate:	This ASTE1 protein is labelled with GST tag.
Application:	ELISA, Western Blotting (WB), Antibody Array (AA), Affinity Purification (AP)

Product Details

Purpose:	ASTE1 (Human) Recombinant Protein (P01)
Sequence:	MGIRGLMSFV EDHSNEFFTD LKLRDTKIVI DGYALFHRLC FSSNLDLRYG GDYDSFADV QKFFESLFAC NICPYVVDG GCDISDKKLT TLKDRAREKI QMAHSLVGG SGYVCP LLIR EVFIQVLIKL RVCVQCFSE ADRDIMTLAN HWNCPVLSSD SDFCIFDLKT GFCPLNSFQW RNMNTIKGTQ NYIPAKCFSL DAFCHHFSNM NKALLPLFAV LCGNDHVNL P IMETFLSKAR LPLGATSSKG RRHHRILG LL NWLSHFANPT EALDNVLKYL PKKDRENVKE LLCCSMEEYQ QSQVKLQDFQ QCGTYVCPDA LNLGLPEWVL VALAKGQLSP FISDALVLR R TILPTQVENM QQPNAHRISQ PIRQIYGLL LNASPHLDKT SWNALPPQPL AFSEVERINK NIRTSIIDAV ELAKDHS DLS RLTELSLRRR QMLLLET LKV KQTILEPIPT SLKLPIAVSC YWLQHTETKA KLHHLQSLLL TMLVGPLIAI INSPGKEELQ EDGAKMLYAE FQRVKAQTRL GTRLDLDTAH IFCQWQSC LQ MGYMLNQLLS TPLPEPDLTR LYSGSLVHGL CQQLLASTSV ESSLICPEA KQLYEYLFNA TRSYAPAEIF LPKGRSNSKK KRQKKQNTSC SKNRGRRTAH TKCWYEGNNR

Product Details

FGLLMVENLE EHSEASNIE

Characteristics: Human ASTE1 full-length ORF (NP_054784.2, 1 a.a. - 679 a.a.) recombinant protein with GST-tag at N-terminal.

Purification: in vitro wheat germ expression system

Target Details

Target: ASTE1

Alternative Name: ASTE1 ([ASTE1 Products](#))

Background: Full Gene Name: asteroid homolog 1 (Drosophila)
Synonyms: HT001,MGC129980

Gene ID: 28990

NCBI Accession: [NM_014065](#)

Application Details

Application Notes: Optimal working dilution should be determined by the investigator.

Comment: Preparation method: in vitro, wheat germ expression system
Product Quality tested by: 12.5% SDS-PAGE Stained with Coomassie Blue.

Restrictions: For Research Use only

Handling

Buffer: 50 mM Tris-HCl, 10 mM reduced Glutathione, pH =8.0 in the elution buffer.

Handling Advice: Aliquot to avoid repeated freezing and thawing.

Storage: -80 °C

Storage Comment: Best use within three months from the date of receipt of this protein.

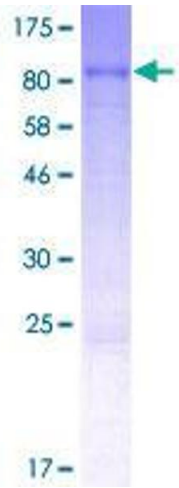


Image 1.