



[Go to Product page](#)

Datasheet for ABIN1345923

ATF2 Protein (AA 1-209) (GST tag)

1 Image

Overview

Quantity:	10 µg
Target:	ATF2
Protein Characteristics:	AA 1-209
Origin:	Human
Source:	Wheat germ
Protein Type:	Recombinant
Purification tag / Conjugate:	This ATF2 protein is labelled with GST tag.
Application:	ELISA, Western Blotting (WB), Antibody Array (AA), Affinity Purification (AP)

Product Details

Purpose:	ATF2 (Human) Recombinant Protein (P01)
Sequence:	MKFKLHVNSA RQYKDLWNMS DDKPFLCTAP GCGQRFTNED HLAVHKHKHE MTLKFGPARN DSVIVADQTP TPTRFLKNCE EVGLFNELAS PFENEFKKAS EDDIKKMPLD LSPLATPIIR SKIEEPSVVE TTHQDSPLPH PESTTSDEKE VPLAQTAQPT SAIVRPASLQ VPNVLLTSSD SSVIIQQAVP SPTSSTVITQ APSSNRPIV
Characteristics:	Human ATF2 full-length ORF (AAH26175, 1 a.a. - 209 a.a.) recombinant protein with GST-tag at N-terminal.
Purification:	in vitro wheat germ expression system

Target Details

Target:	ATF2
---------	------

Target Details

Alternative Name:	ATF2 (ATF2 Products)
Background:	Full Gene Name: activating transcription factor 2 Synonyms: CRE-BP1, CREB2, HB16, MGC111558, TREB7
Gene ID:	1386
Pathways:	MAPK Signaling , RTK Signaling , Thyroid Hormone Synthesis , Activation of Innate immune Response , Chromatin Binding , Myometrial Relaxation and Contraction , Synaptic Membrane , Tube Formation , Toll-Like Receptors Cascades

Application Details

Application Notes:	Optimal working dilution should be determined by the investigator.
Comment:	Preparation method: in vitro, wheat germ expression system Product Quality tested by: 12.5% SDS-PAGE Stained with Coomassie Blue.
Restrictions:	For Research Use only

Handling

Buffer:	50 mM Tris-HCl, 10 mM reduced Glutathione, pH =8.0 in the elution buffer.
Handling Advice:	Aliquot to avoid repeated freezing and thawing.
Storage:	-80 °C
Storage Comment:	Best use within three months from the date of receipt of this protein.

Images

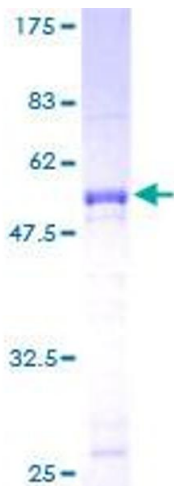


Image 1.