



[Go to Product page](#)

Datasheet for ABIN1345939

ATF5 Protein (AA 1-282) (GST tag)

1 Image

Overview

Quantity:	2 µg
Target:	ATF5
Protein Characteristics:	AA 1-282
Origin:	Human
Source:	Wheat germ
Protein Type:	Recombinant
Purification tag / Conjugate:	This ATF5 protein is labelled with GST tag.
Application:	ELISA, Western Blotting (WB), Antibody Array (AA), Affinity Purification (AP)

Product Details

Sequence: MSLLATLGLE LDRALLPASG LGWLVDYGKL PPAPAPLAPY EVLGGALEGG LPVGGEPLAG
DGFSDWMTER VDFTALLPLE PPLPPGTL PQSPPTDLEA MASLLKKELE QMEDFFLDAP
LLPPSPPPPL PPPPLPPAPS LPLSLPSFDL QPPVLDLTD LLAIYCRNEA GQEEVGMPPPL
PPPQQPPPPS PPQPSRLAPY PHPATTRGDR KQKKRDQNKS AALRYRQRKR AEGEALEGEC
QGLEARNREL KERAESVERE IQYVKDLLIE VYKARSQRTR SC

Target Details

Target:	ATF5
Alternative Name:	ATF5 (ATF5 Products)
Background:	Full Gene Name: activating transcription factor 5 Synonyms: ATFX,FLJ34666,HMFN0395

Target Details

Gene ID: 22809

Pathways: [Myometrial Relaxation and Contraction](#)

Application Details

Application Notes: Optimal working dilution should be determined by the investigator.

Comment: Preparation method: in vitro, wheat germ expression system
Product Quality tested by: 12.5% SDS-PAGE Stained with Coomassie Blue.

Restrictions: For Research Use only

Handling

Buffer: 50 mM Tris-HCl, 10 mM reduced Glutathione, pH =8.0 in the elution buffer.

Handling Advice: Aliquot to avoid repeated freezing and thawing.

Storage: -80 °C

Storage Comment: Store at -80 °C. Aliquot to avoid repeated freezing and thawing.

Expiry Date: 3 months

Images

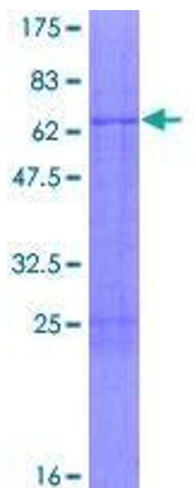


Image 1.